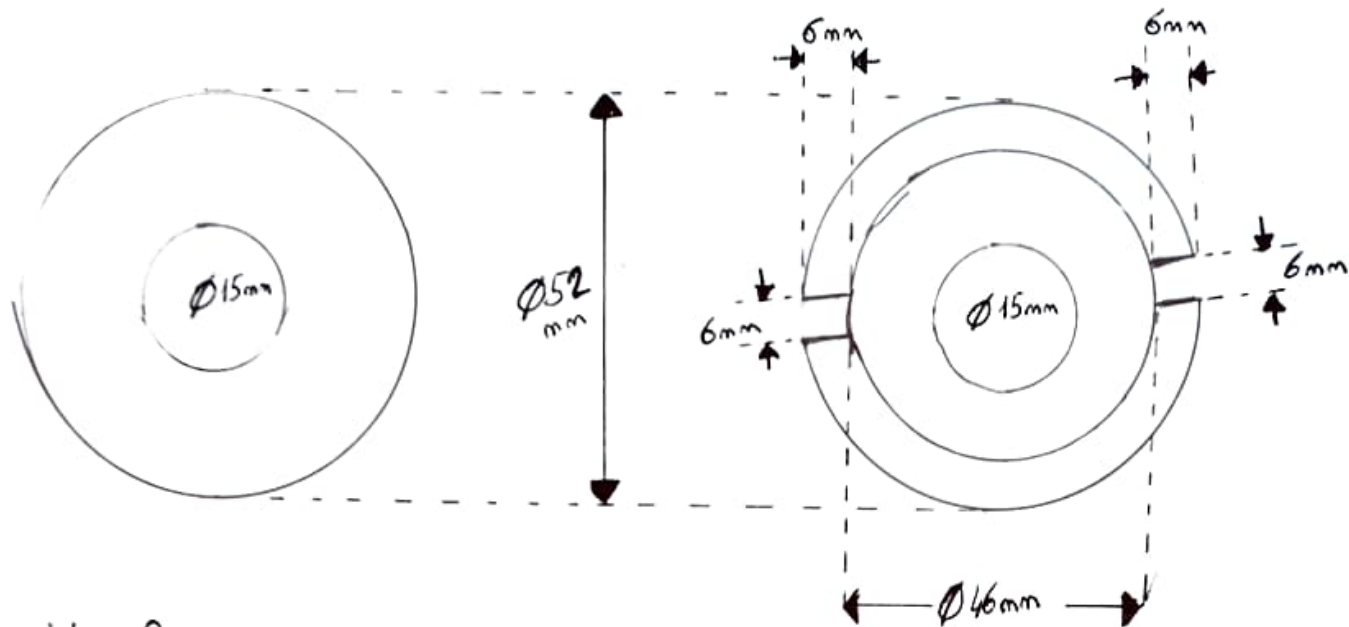
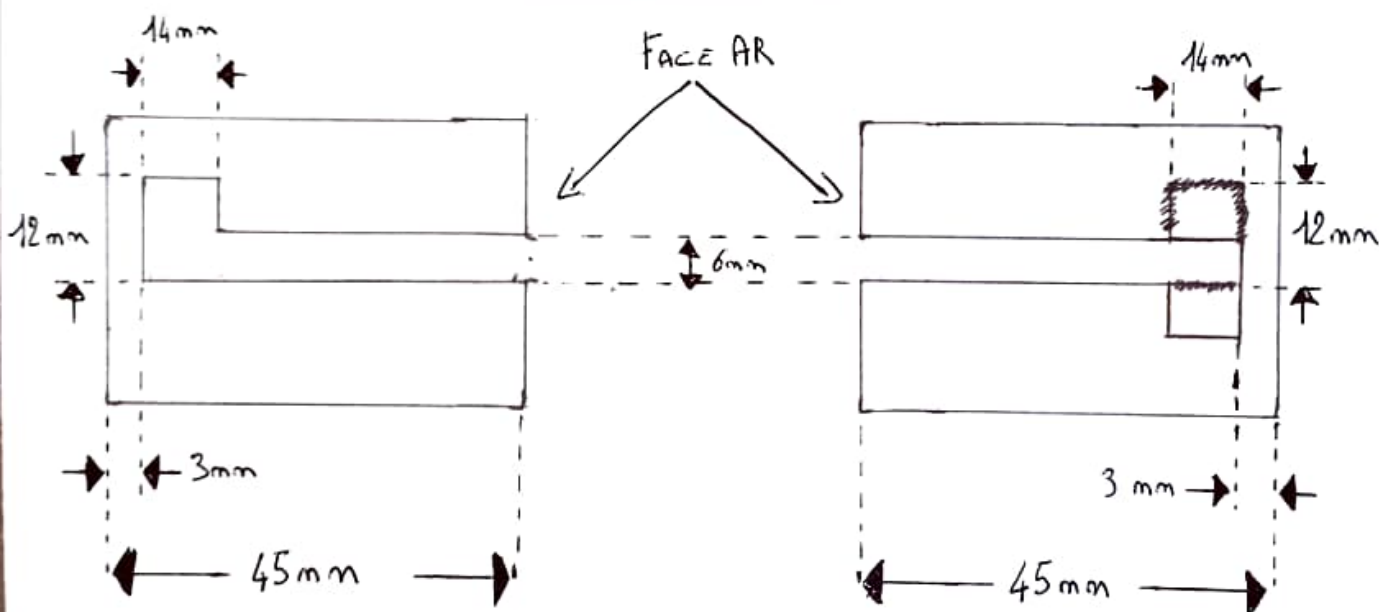


BUSES DE REFoulement Inox



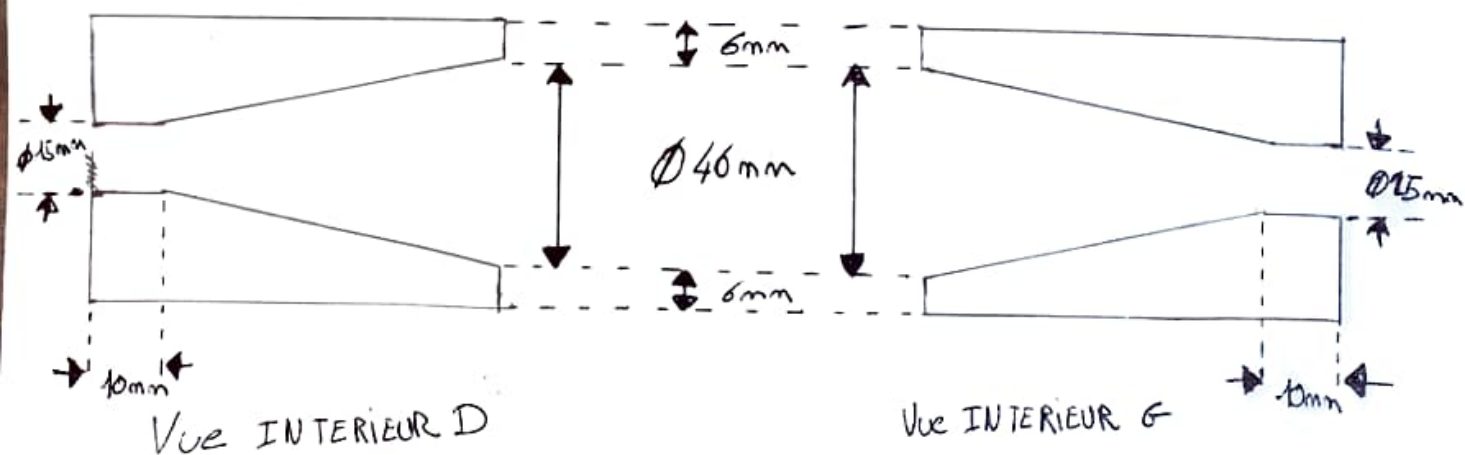
Vue AVANT

Vue ARRIERE



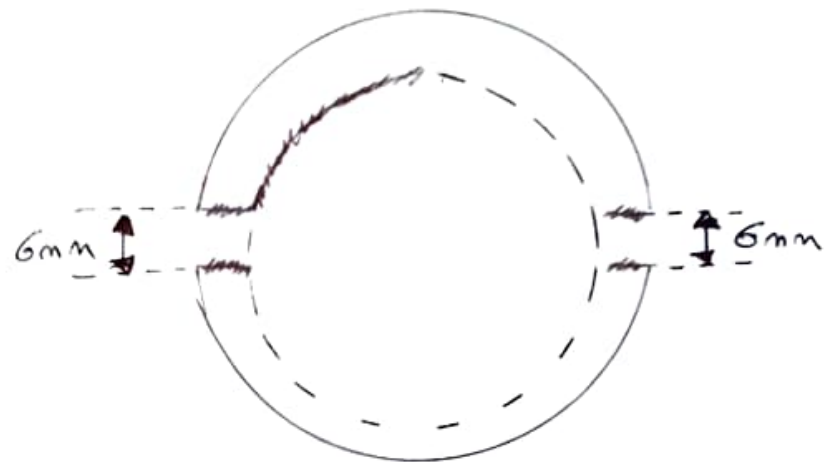
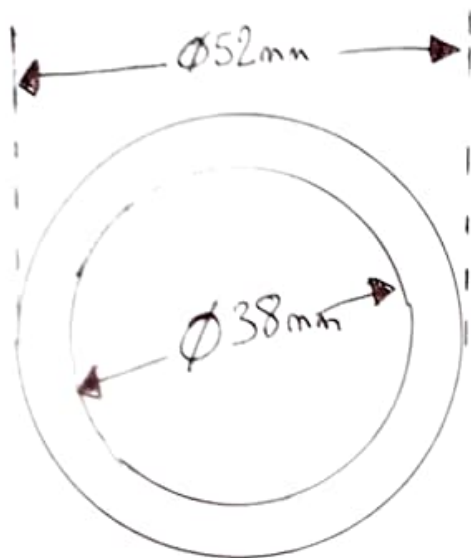
Vue EXTERIEUR D

Vue EXTERIEUR G

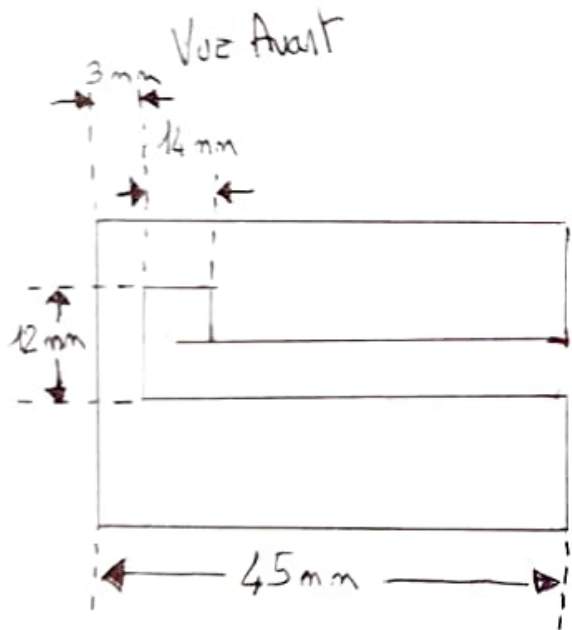


Vue INTERIEUR D

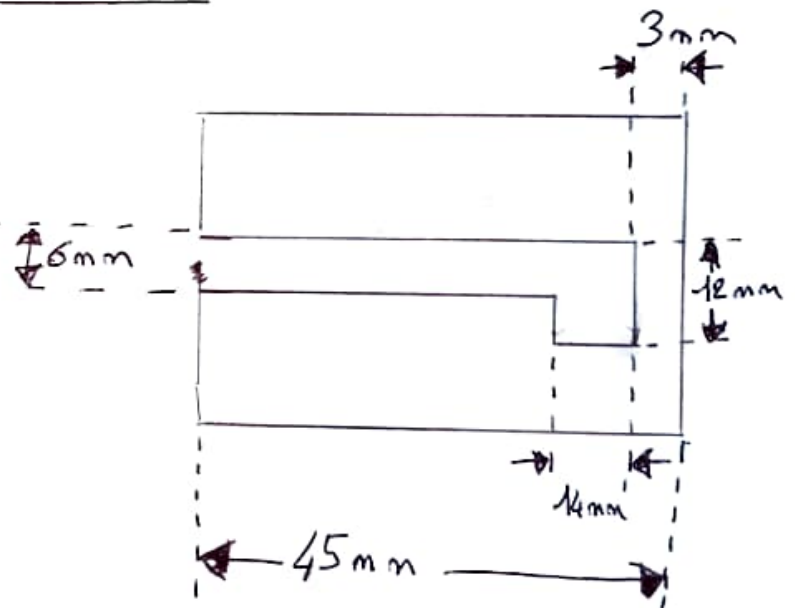
Vue INTERIEUR G



VUE ARRIERE

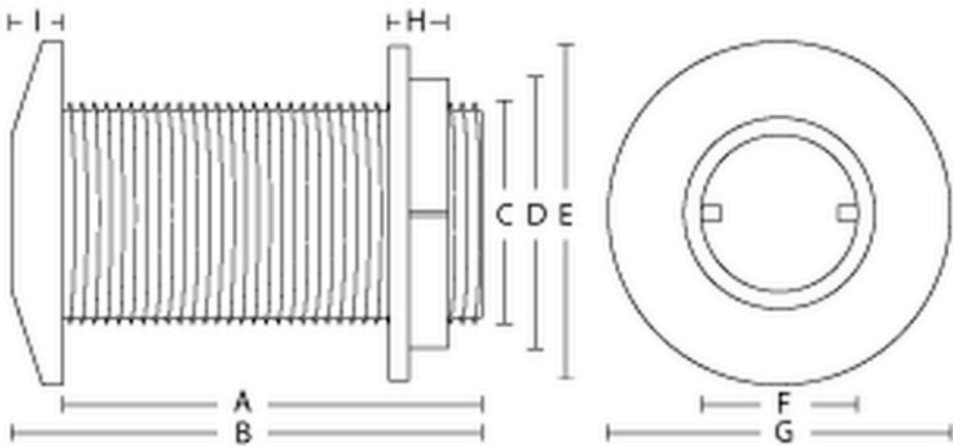


VUE EXTERIEURE D



VUE EXTERIEURE G

PRISE Balais inox



→ Passe coque inox avec chanfrein G2"

→ A: 100 mm

B: 109 mm

C: 58.5 mm

D: 74 mm

E: 87 mm

F: 52 mm

G: 88 mm

H: 14.5 mm

I: 9 mm

Poids : 0.900 g