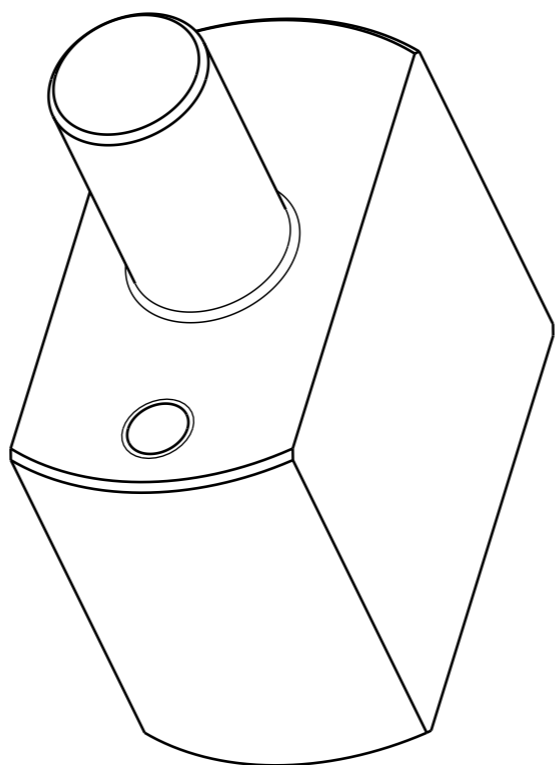
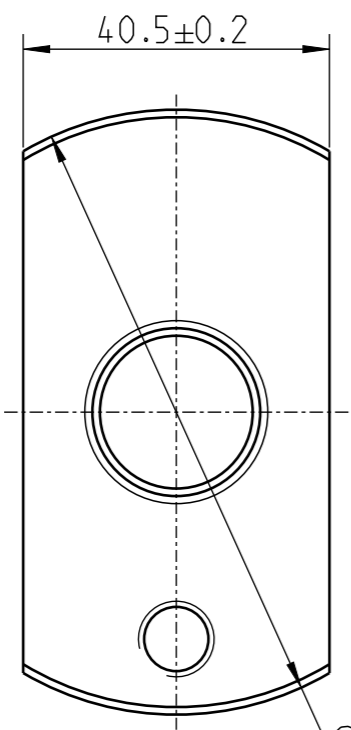
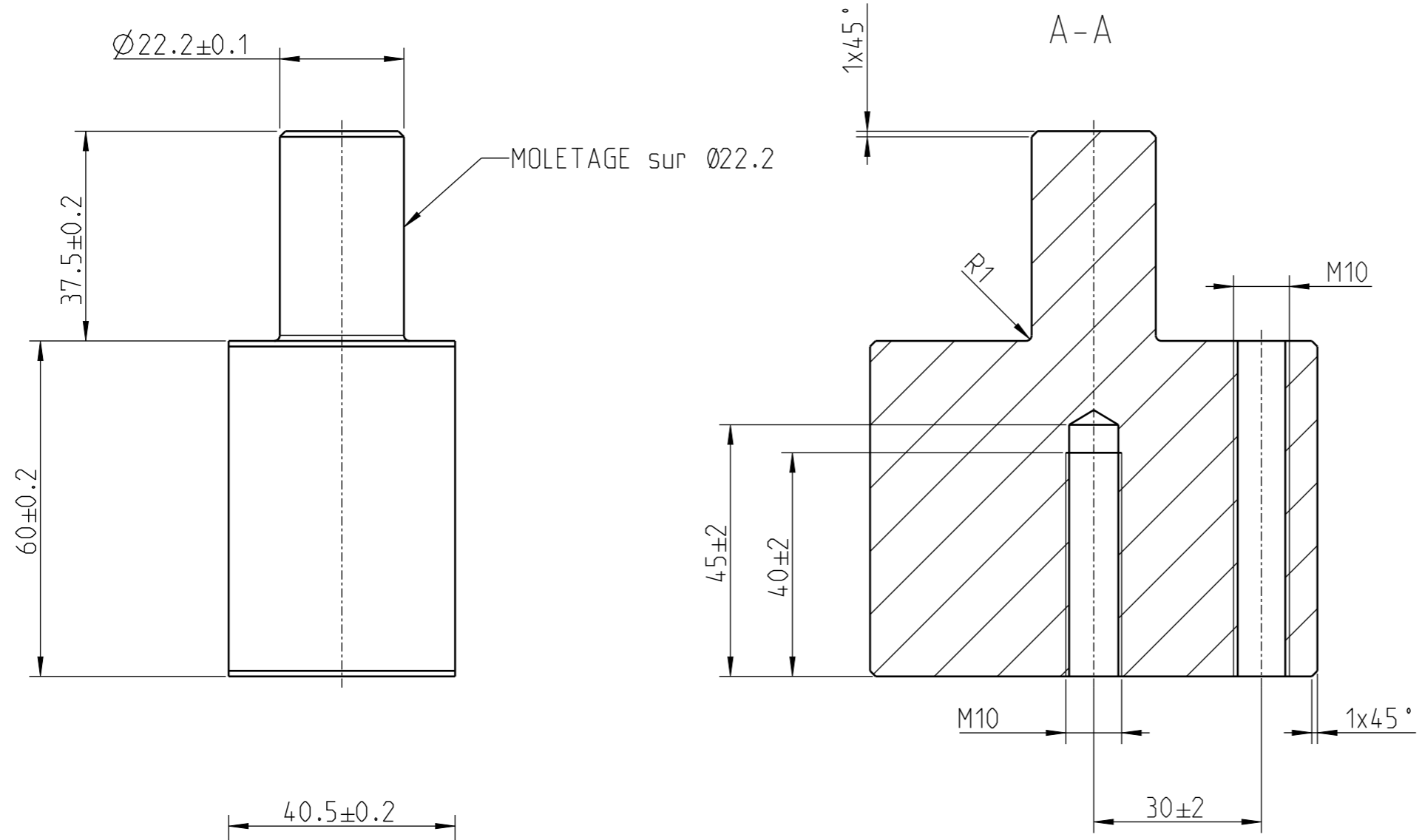


© Alle Rechte bei AVENTICS S.A.S., eine Tochterfirma der Emerson Electric Co., auch für den Fall von Schutzrechtsmeldungen. Jede Verfügungsbefugnis, wie Kopier- und Weitergaberecht, bei uns.

© This document, as well as the data, specifications and other information set forth in it, are the exclusive property of AVENTICS S.A.S., a subsidiary of Emerson Electric Co. It may not be reproduced or given to third parties without its consent.



general tolerances acc.to/TOL. GEN. SELON					
dimensional tol./TOL. DIM.			tol.class/C.D.T.		
ISO 2768-1:1989-11			m		
geometrical tol./TOLER. GEOM.			tol.class/C.D.T.		
ISO 2768-2:1989-11			H		
≥ 0.5 ≤ 3	> 3 ≤ 6	> 6 ≤ 30	> 30 ≤ 120	> 120 ≤ 400	> 400 ≤ 1000
non-toleranced dimensions/COTES NON TOL.					
±0.1	±0.1	±0.2	±0.3	±0.5	±0.8
non-tol.broken edges/ARETES CASSEES NON TOL.					
±0.2	±0.5	±1			
angles. length of the shorter side/ ANG.. LONG. COTE PLUS COURT					
≤ 10	> 10 ≤ 50	> 50 ≤ 120	> 120 ≤ 400	> 400	
±1°	±0°30'	±0°20'	±0°10'	±0°5'	
all non-dimensioned edges of undef.shape acc.to/ TT ARETES NON COTEES FORMES NON DEF. SELON					
DIN EN ISO 13715:2020-01					
surface texture according to/ ETAT DE SURFACE SELON					
DIN EN ISO 1302:2002-06					
all linear dimensions in/ TOUTES COTES LINEAIRES EN					mm
size acc. to/DIMENSION SELON					
DIN EN ISO 14405-1:2017-07					
principle of independency/ PRINCIPE D'INDEPENDANCE					(LP)

State		Project No.		Division		Item No.	
Design				AVFR			
By	FPE2BNV			ECN-Descript.			
Date	2022-01-27						
	Drawn	Checked	Approved	ECN created	ECN appr.	ECN Loc.	ECN Number
Material/						Missed details	
Material Details						From	
STEEL							
EN10025-2 1.0060 [E335]							
Treatment							
Language	Syst.	Weight			SPACER		
EN/FR	PE	1.578 Kg			ENTRETOISE		
	Unit	Scale	EMERSON 74131 BONNEVILLE FRANCE		FMC 0191925		Doc.type
	mm	1:1			Repl. for		Ind.
Ref. No.					Tolerance		N/A

d:\pic_wm_number\d / / FMC0191925 / AA.1 / FMC0191888 / PART / AA.2