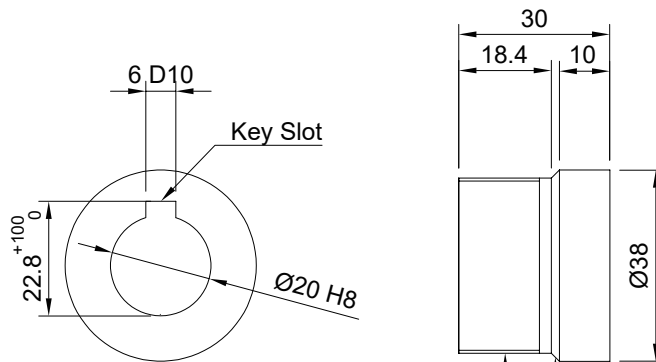
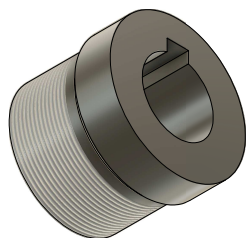


All dimensions are in mm except for the thread

6 D10 is [-78µm;+30µm]

20 H8 is [0 µm;+33µm]

Threading goes toward the chamfer



Thread for freewheel 1.375in x 24tpi

45° Chamfer

1.375in = 34.925mm

Major Diameter : [34.719 ; 34.899] [mm]

Minor Diameter : max 33,639mm

For info : Pitch Diameter [34,087 ; 34.212]

See ISO 6698

General Tolerances

Dimensions from 0.5 to 3 mm +/-0.1 mm

Dimensions from 3 to 6 mm +/-0.1 mm

Dimensions from 6 to 30 mm +/-0.2 mm

Dimensions from 30 to 120 mm +/- 0.3 mm

Dept.	Technical reference	Created by Guis	13/03/2021	Approved by
Stainless Steel		Document type	Document status	
		Title	Freewheel and disk brake adapter	
		Rev.	Date of issue	Sheet
		A	14/03/2021	1/1