
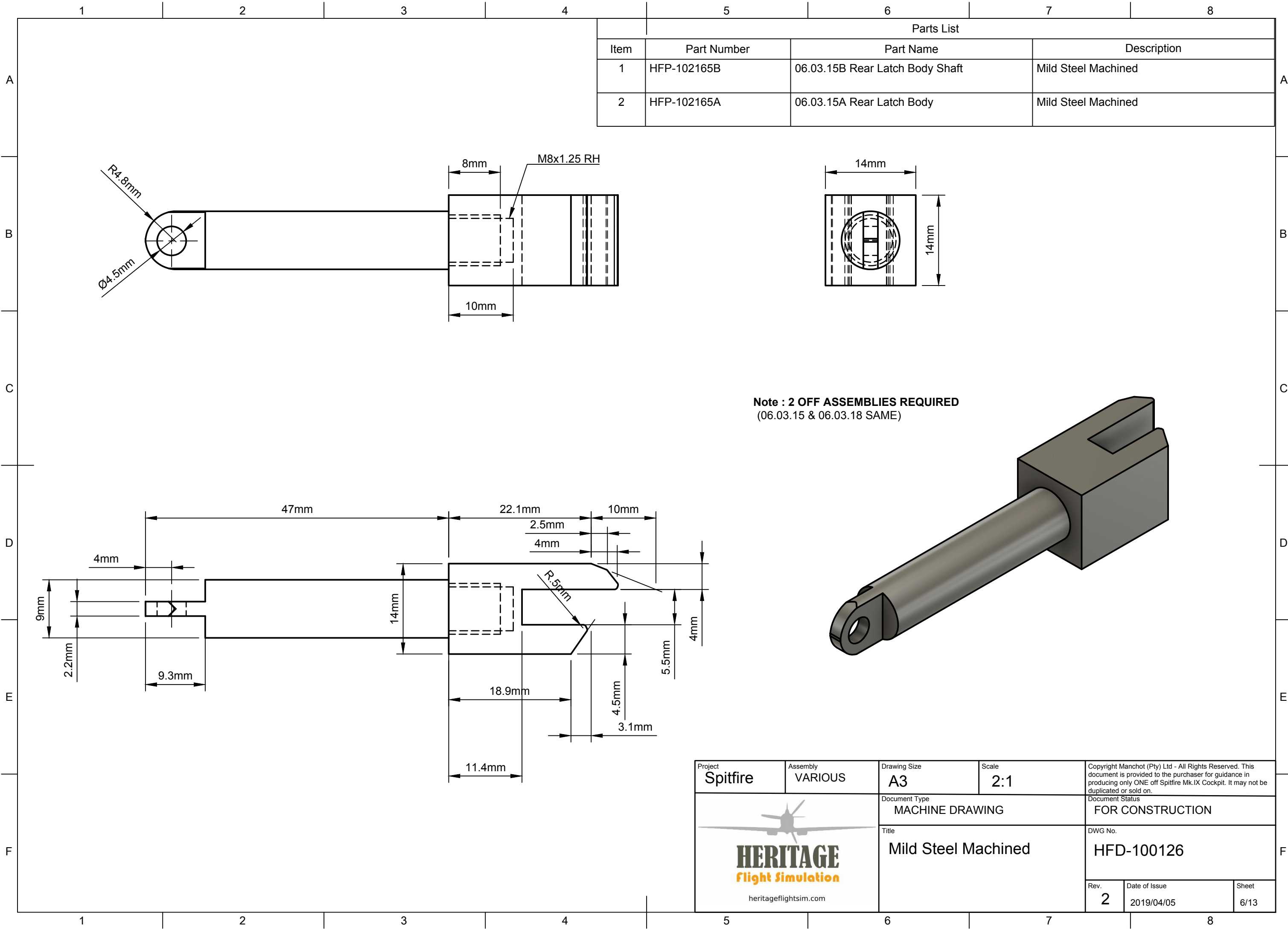



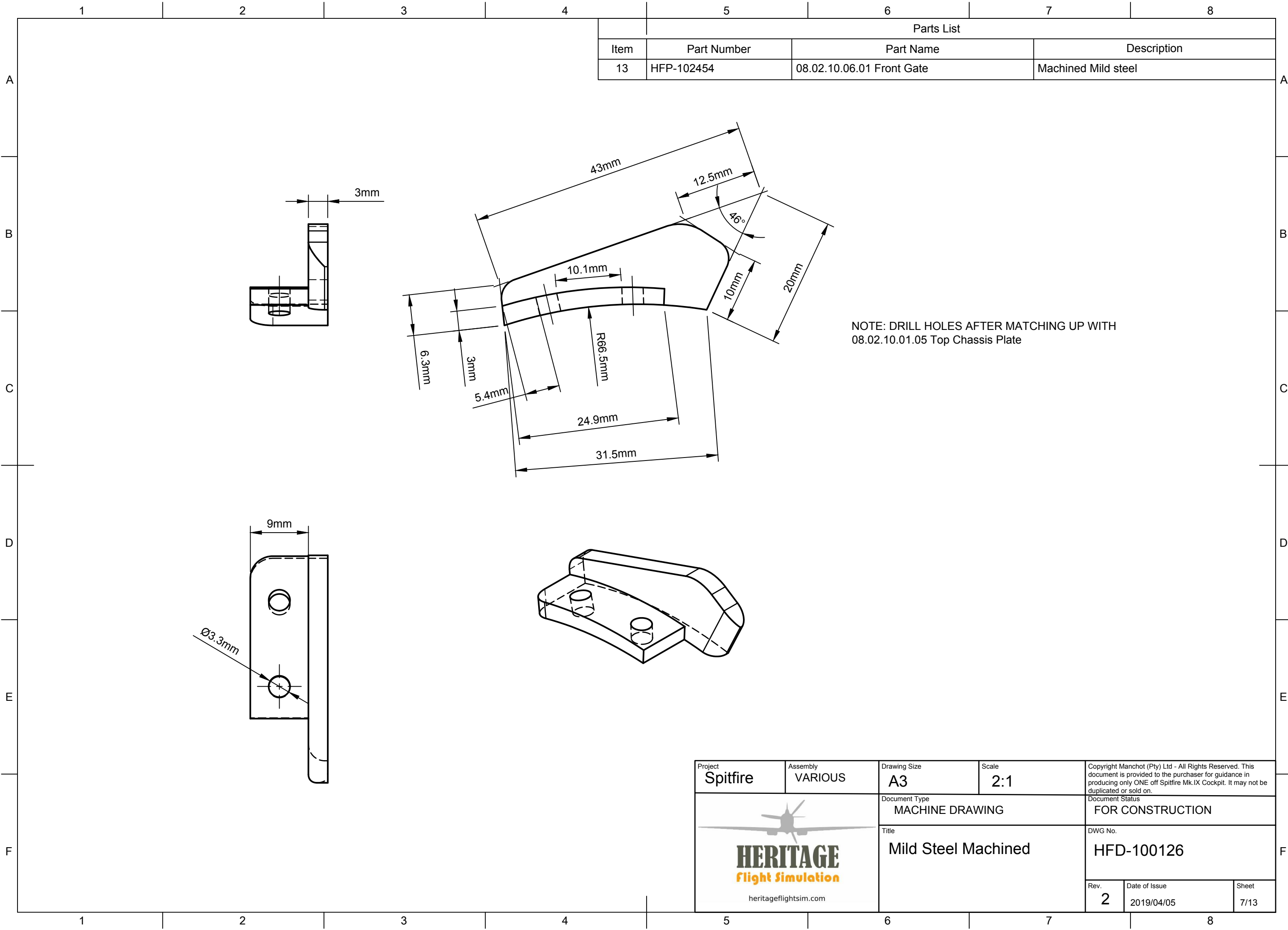
Project Spitfire	Assembly VARIOUS	Drawing Size A3	Scale 2:1	Copyright Manchot (Pty) Ltd - All Rights Reserved. This document is provided to the purchaser for guidance in producing only ONE off Spitfire Mk.IX Cockpit. It may not be duplicated or sold on.		
 heritageflightsim.com		Document Type MACHINE DRAWING		Document Status FOR CONSTRUCTION		
		Title Mild Steel Machined		DWG No. HFD-100126		
		Rev. 2	Date of Issue 2019/04/05	Sheet 5/13		




Parts List			
Item	Part Number	Part Name	Description
1	HFP-102165B	06.03.15B Rear Latch Body Shaft	Mild Steel Machined
2	HFP-102165A	06.03.15A Rear Latch Body	Mild Steel Machined

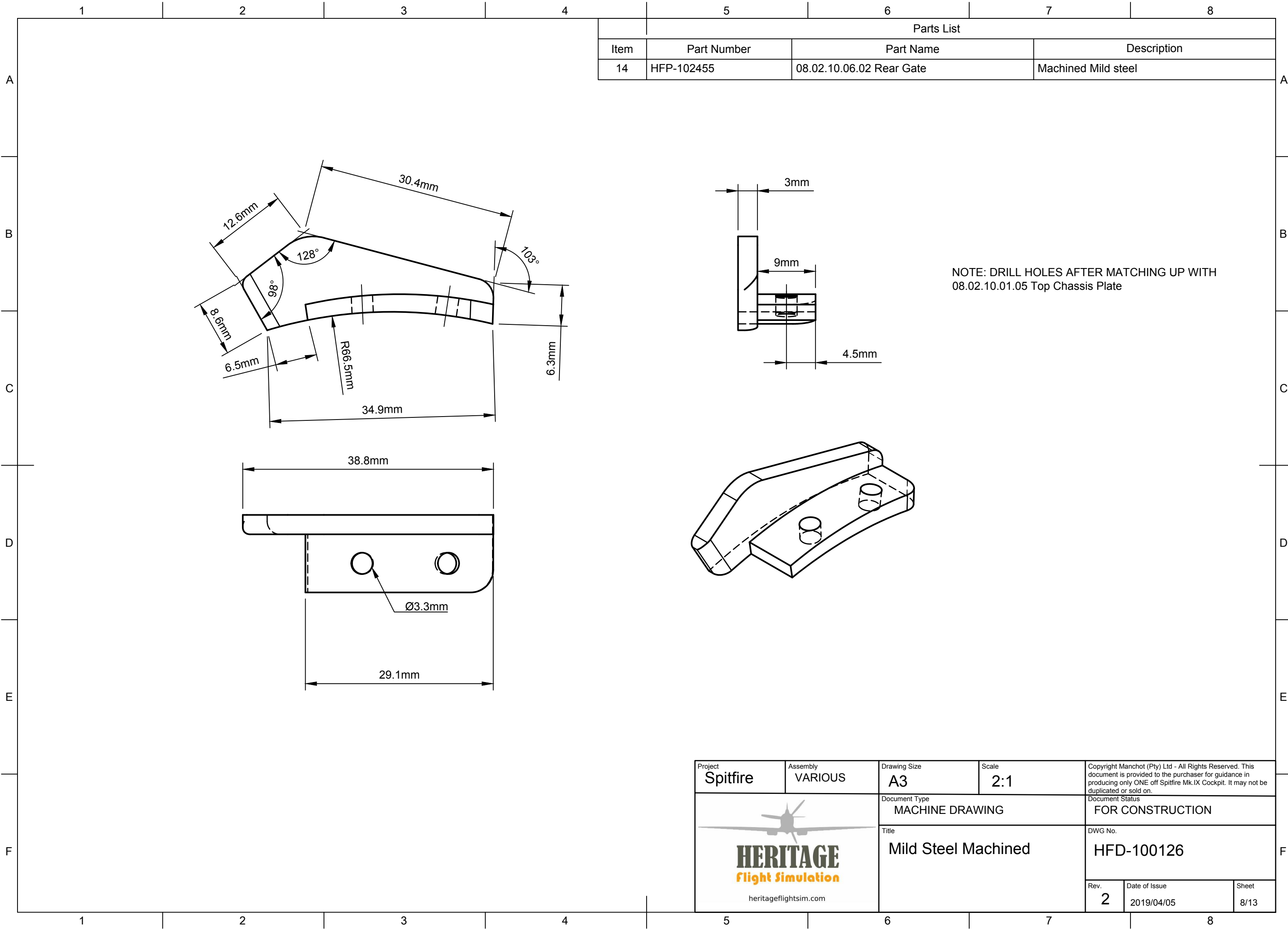
Note : 2 OFF ASSEMBLIES REQUIRED
(06.03.15 & 06.03.18 SAME)

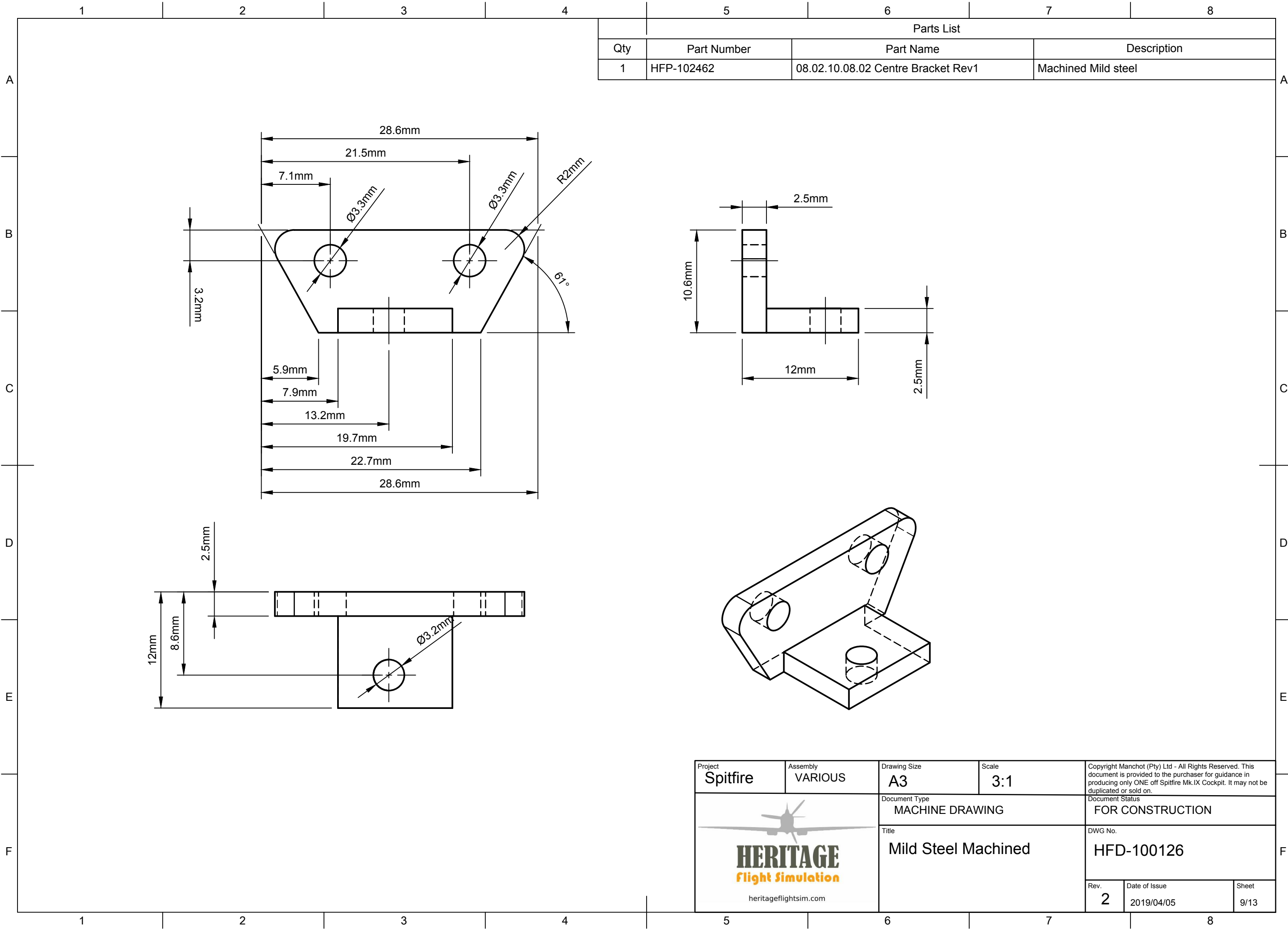
Project Spitfire	Assembly VARIOUS	Drawing Size A3	Scale 2:1	Copyright Manchot (Pty) Ltd - All Rights Reserved. This document is provided to the purchaser for guidance in producing only ONE off Spitfire Mk.IX Cockpit. It may not be duplicated or sold on.		
 heritageflightsim.com		Document Type MACHINE DRAWING		Document Status FOR CONSTRUCTION		
		Title Mild Steel Machined		DWG No. HFD-100126		
		Rev. 2	Date of Issue 2019/04/05	Sheet 6/13		

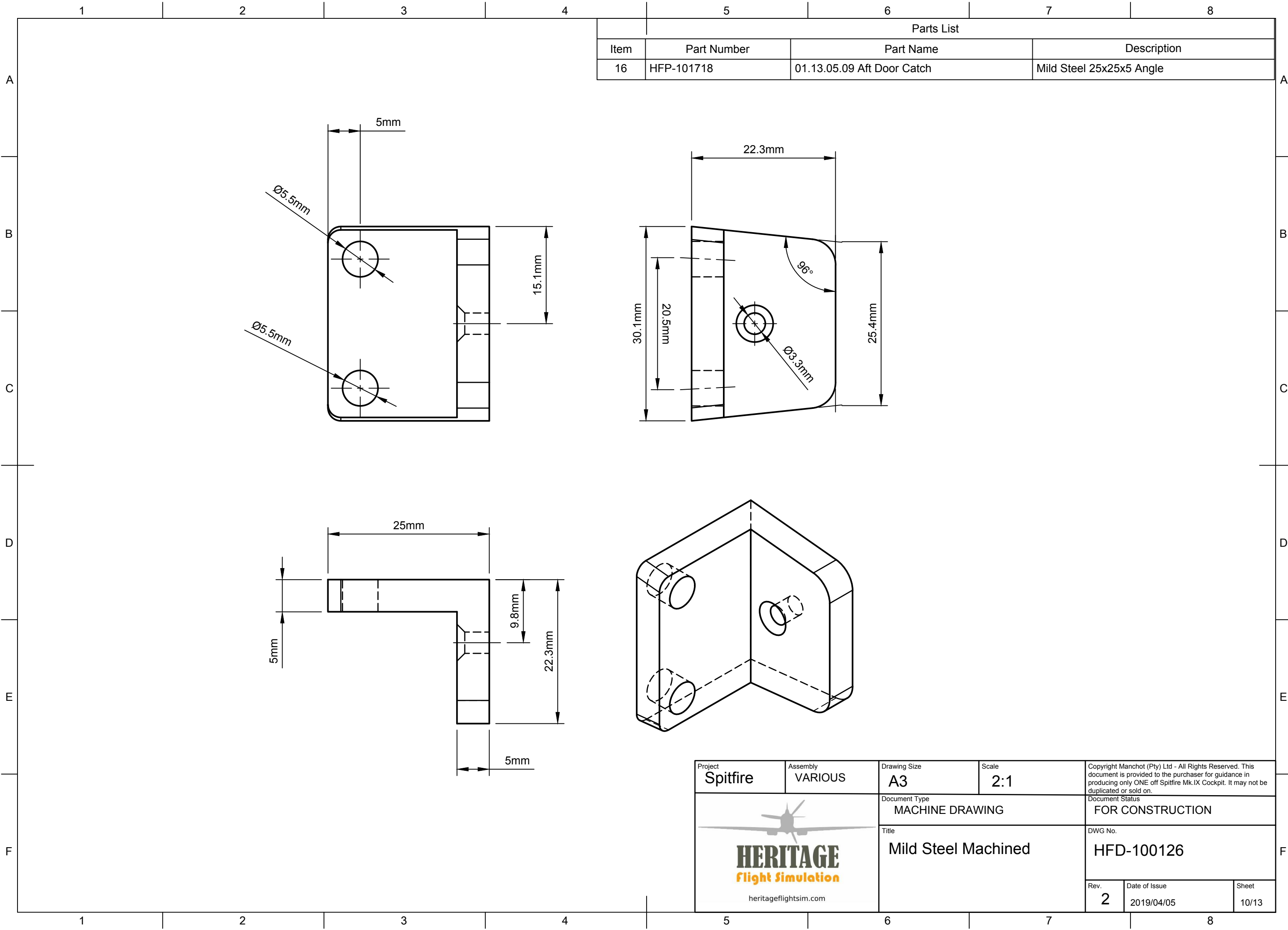


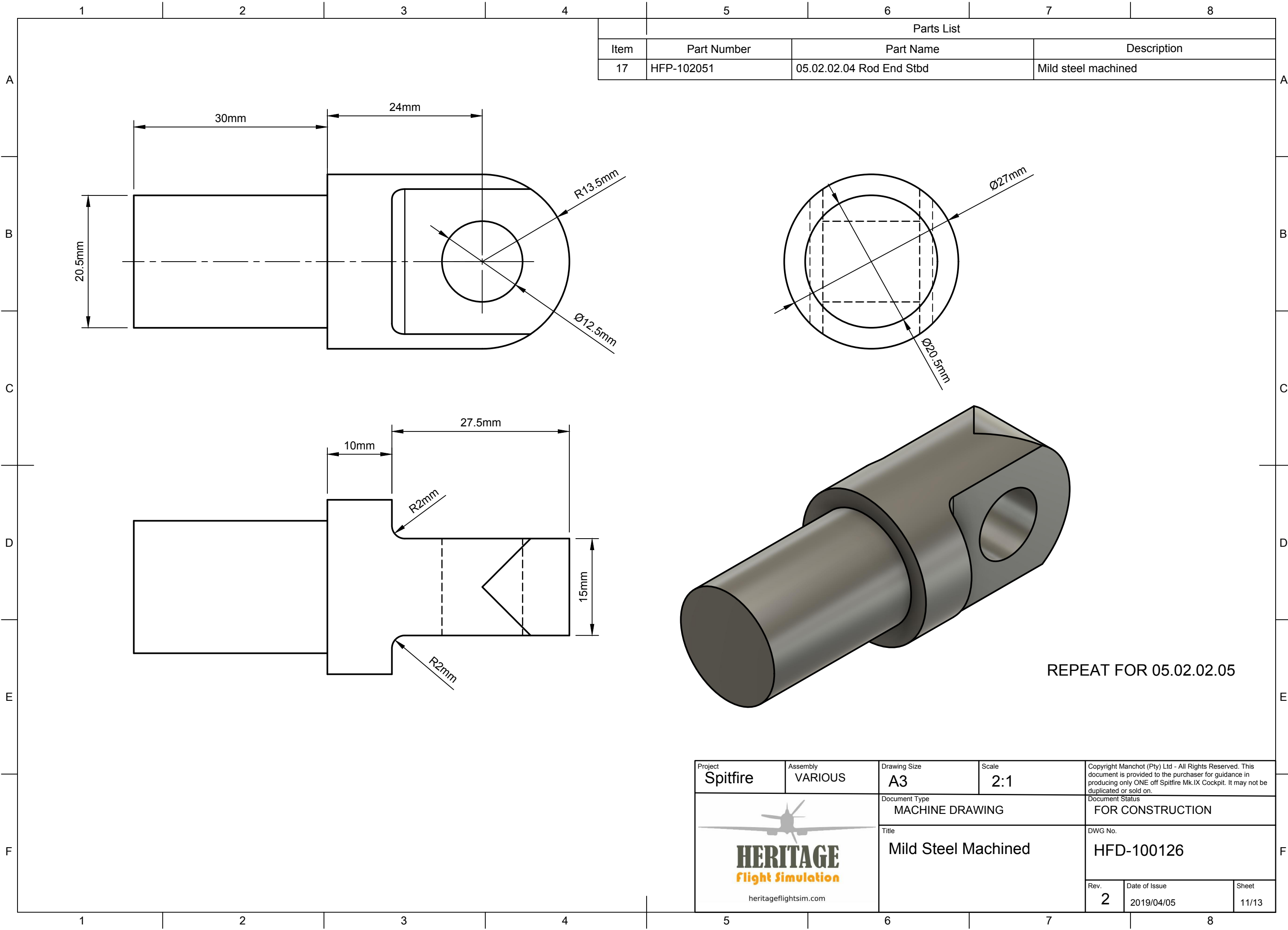
Parts List			
Item	Part Number	Part Name	Description
13	HFP-102454	08.02.10.06.01 Front Gate	Machined Mild steel

Project Spitfire	Assembly VARIOUS	Drawing Size A3	Scale 2:1	Copyright Manchot (Pty) Ltd - All Rights Reserved. This document is provided to the purchaser for guidance in producing only ONE off Spitfire Mk.IX Cockpit. It may not be duplicated or sold on.		
 heritageflightsim.com		Document Type MACHINE DRAWING		Document Status FOR CONSTRUCTION		
		Title Mild Steel Machined		DWG No. HFD-100126		
		Rev. 2	Date of Issue 2019/04/05	Sheet 7/13		




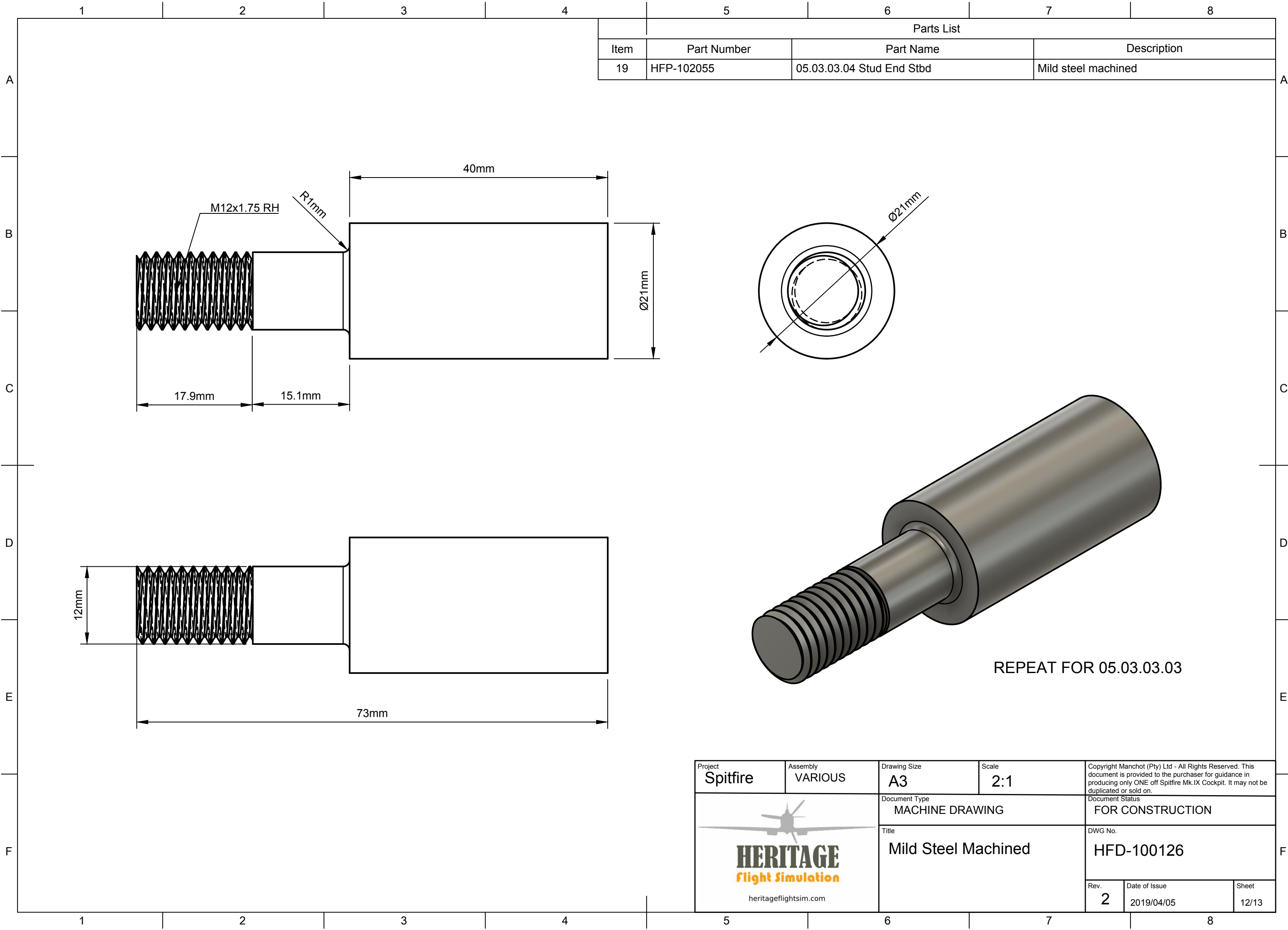





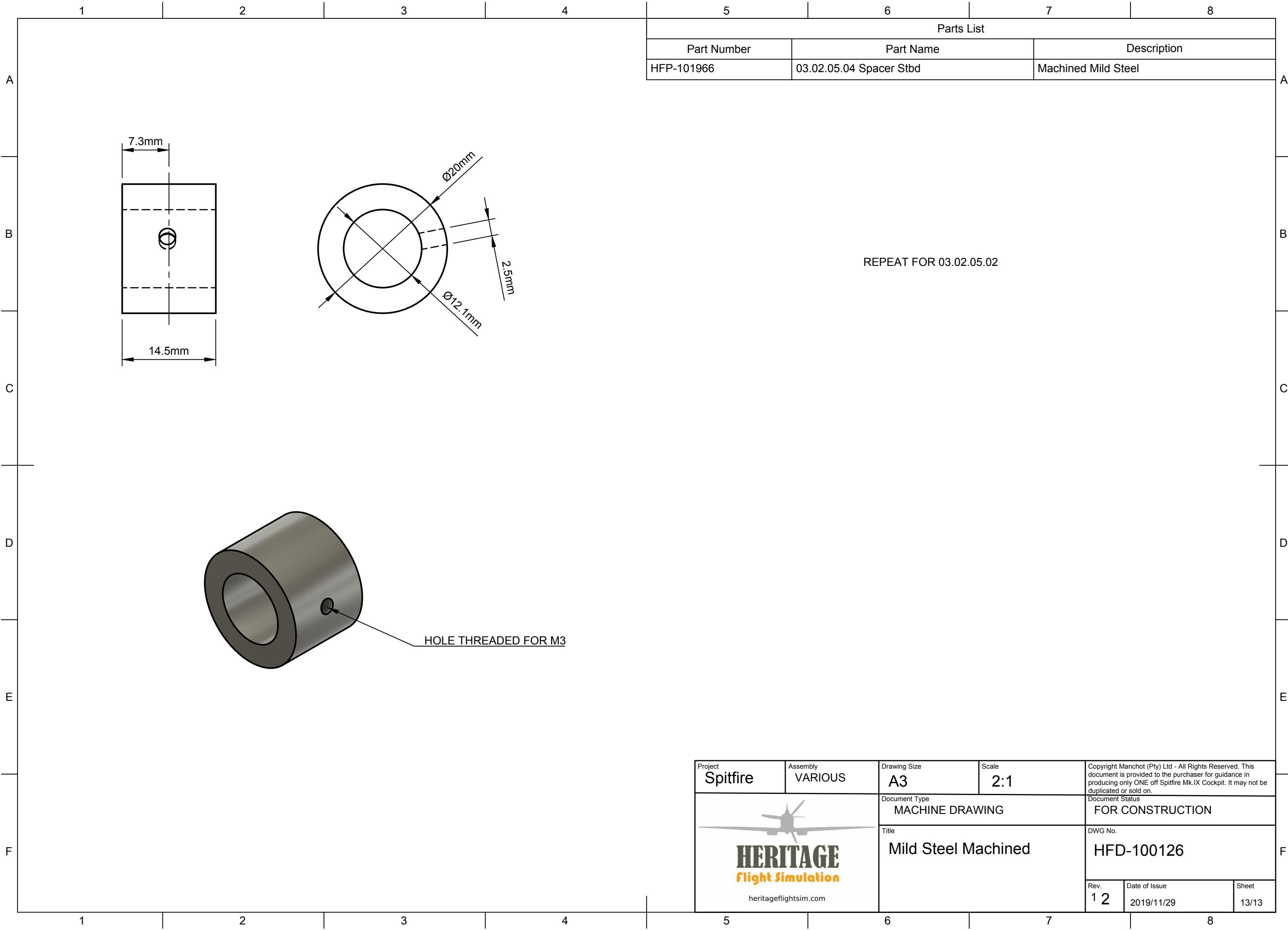


Parts List			
Item	Part Number	Part Name	Description
17	HFP-102051	05.02.02.04 Rod End Stbd	Mild steel machined


Project Spitfire	Assembly VARIOUS	Drawing Size A3	Scale 2:1	Copyright Manchot (Pty) Ltd - All Rights Reserved. This document is provided to the purchaser for guidance in producing only ONE off Spitfire Mk.IX Cockpit. It may not be duplicated or sold on.		
		Document Type MACHINE DRAWING	Document Status FOR CONSTRUCTION			
		Title Mild Steel Machined	DWG No. HFD-100126			
			Rev. 2	Date of Issue 2019/04/05	Sheet 11/13	



Project Spitfire	Assembly VARIOUS	Drawing Size A3	Scale 2:1	Copyright Manchot (Pty) Ltd - All Rights Reserved. This document is provided to the purchaser for guidance in producing only ONE off Spitfire Mk.IX Cockpit. It may not be duplicated or sold on.	
 heritageflightsim.com		Document Type MACHINE DRAWING		Document Status FOR CONSTRUCTION	
		Title Mild Steel Machined		DWG No. HFD-100126	
		Rev. 2	Date of Issue 2019/04/05	Sheet 12/13	



Parts List		
Part Number	Part Name	Description
HFP-101966	03.02.05.04 Spacer Stbd	Machined Mild Steel

Project Spitfire	Assembly VARIOUS	Drawing Size A3	Scale 2:1	Copyright Manchot (Pty) Ltd - All Rights Reserved. This document is provided to the purchaser for guidance in producing only ONE off Spitfire Mk.IX Cockpit. It may not be duplicated or sold on.		
		Document Type MACHINE DRAWING		Document Status FOR CONSTRUCTION		
		Title Mild Steel Machined		DWG No. HFD-100126		
				Rev. 1 2	Date of Issue 2019/11/29	Sheet 13/13