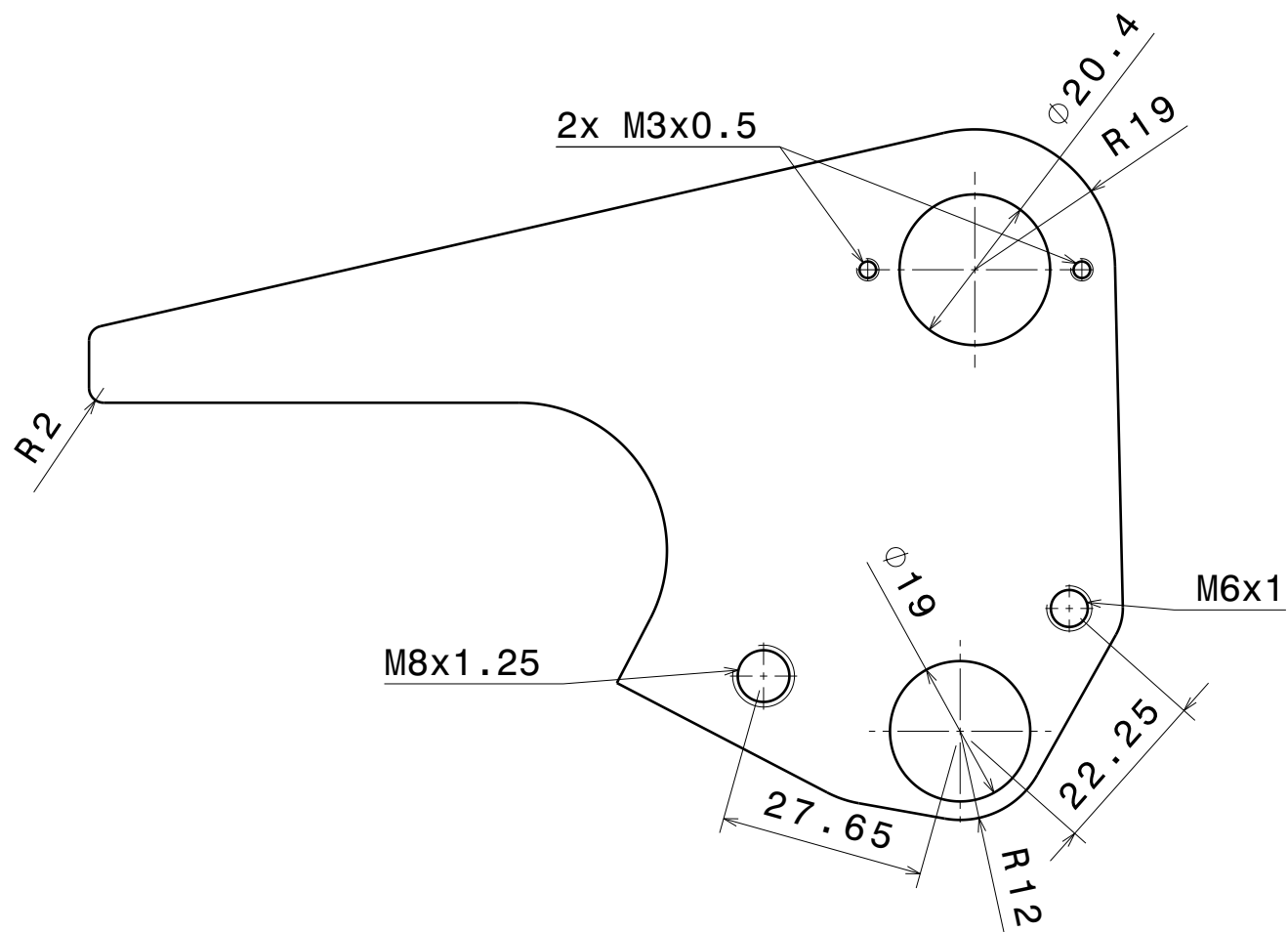
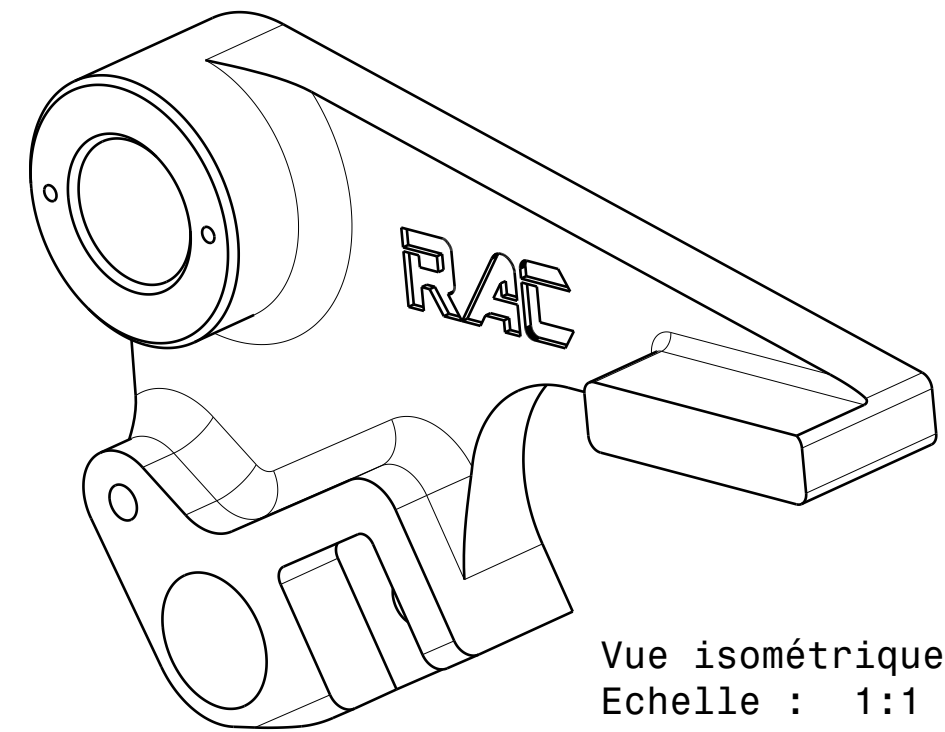
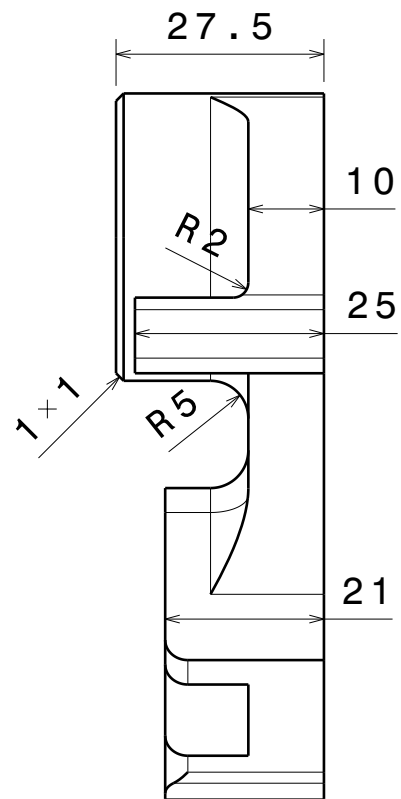


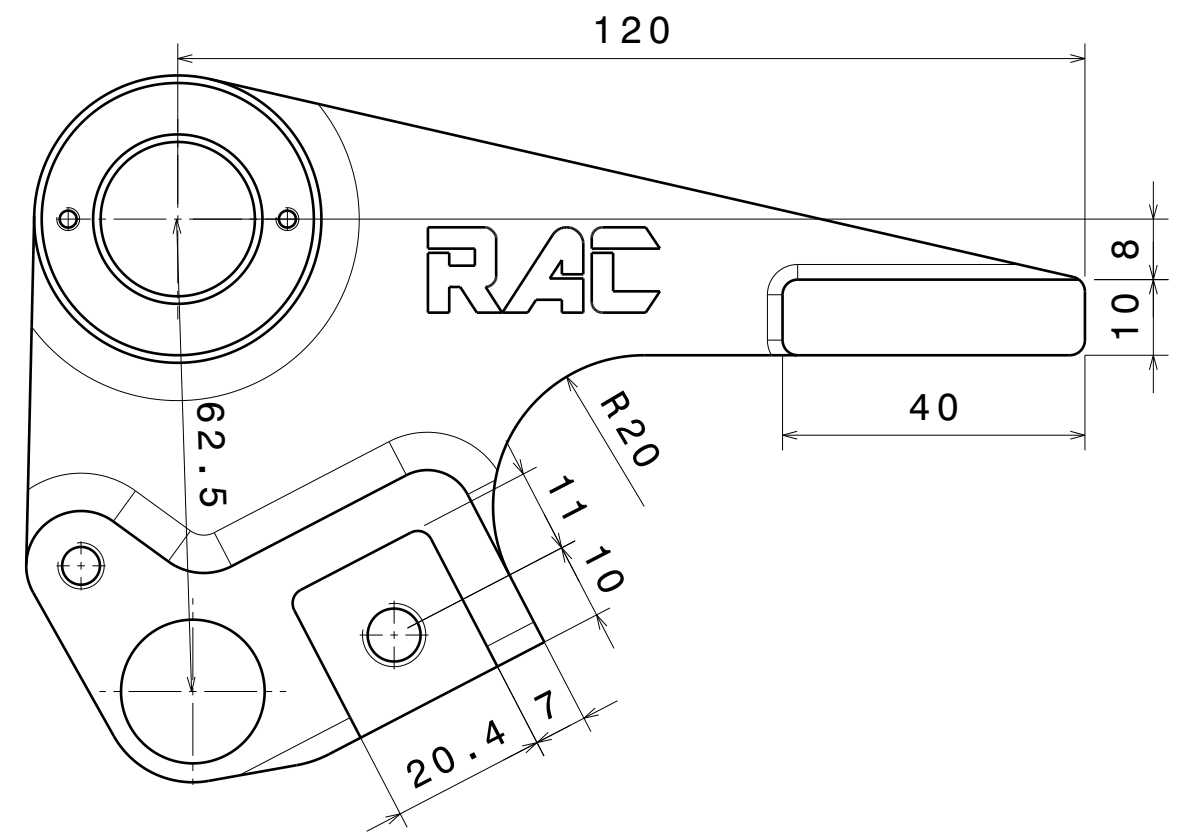
Matière : Aluminium 6061 ou 7075  
 Traitement : Anodisé noir sinon incolore  
 Tolérance : +/- 0.1mm  
 Taraudage traversant sauf M3 (prof min 20mm)  
 Gravure "RAC" profondeur 1mm



Vue de derrière  
Echelle : 1:1



Vue de droite  
Echelle : 1:1



Vue de face  
Echelle : 1:1