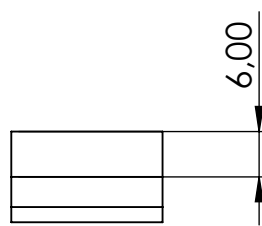
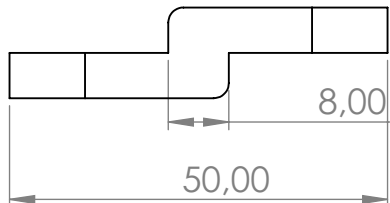


4 3 2 1

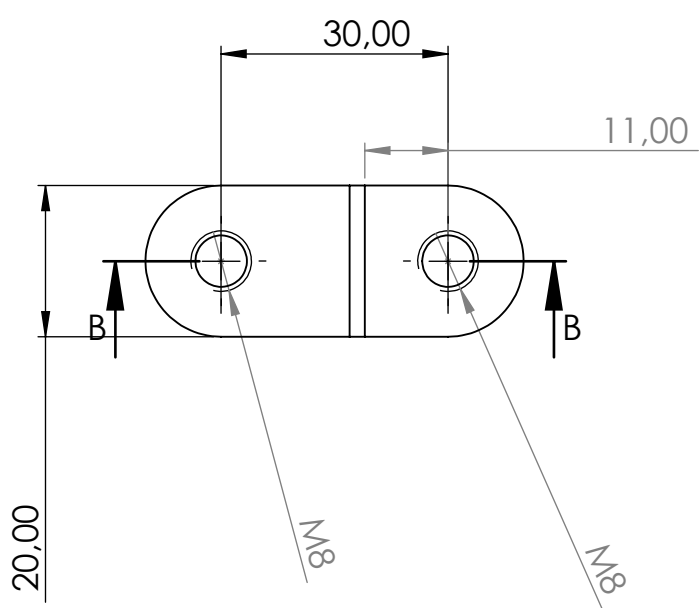
F

F



E

E

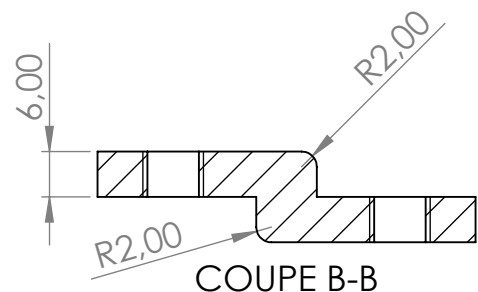


D

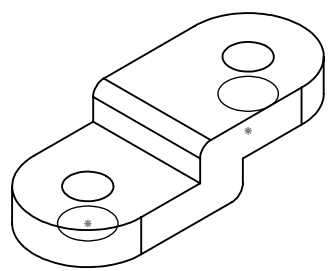
D

C

C



COUPE B-B



B

B

SAUF INDICATION CONTRAIRE: LES COTES SONT EN MILLIMETRES ETAT DE SURFACE: TOLERANCES: LINEAIRES: ANGULAIRES:		FINITION:		CASSER LES ANGLES VIFS		NE PAS CHANGER L'ECHELLE		REVISION	
NOM		SIGNATURE		DATE		TITRE:			
AUTEUR									
VERIF.									
APPR.									
FAB.									
QUAL.									
						MATERIAU:		No. DE PLAN	
						MASSE:		ECHELLE:1:1	
								FEUILLE 1 SUR 1	

A

A

CALES REPOSE PIEDS 30MM ENT

A4