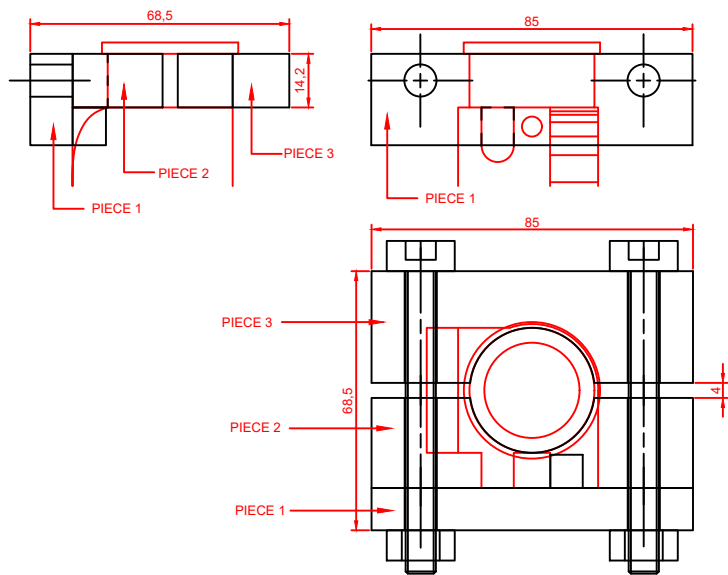
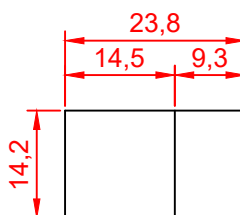
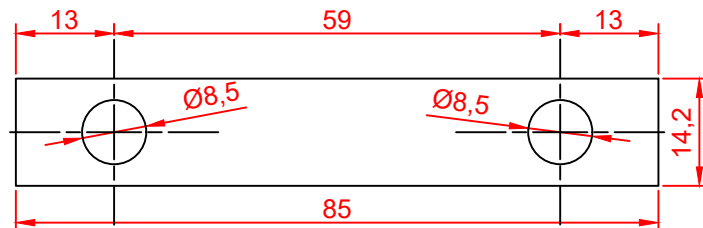
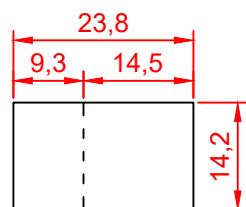
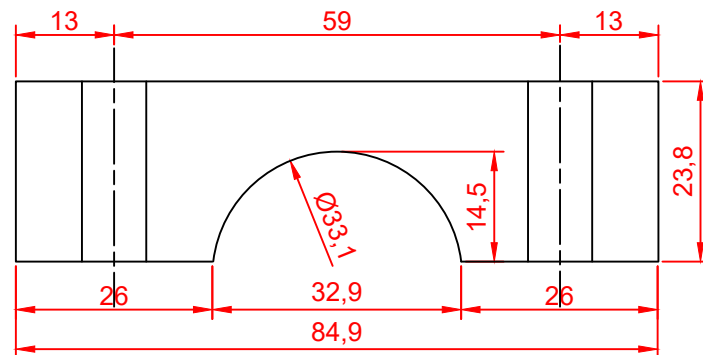
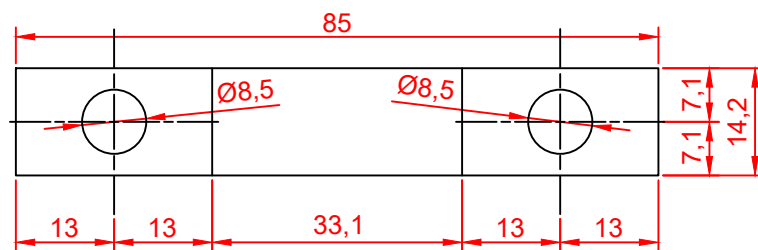
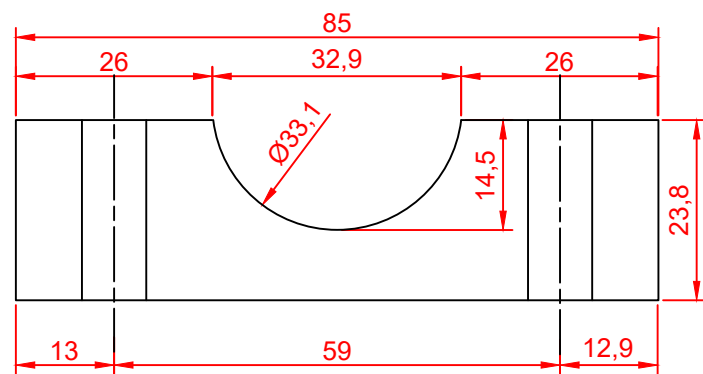


3 pièces de l'outil assemblé

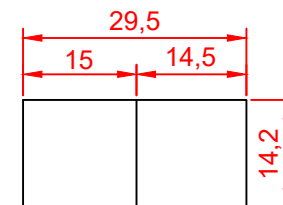
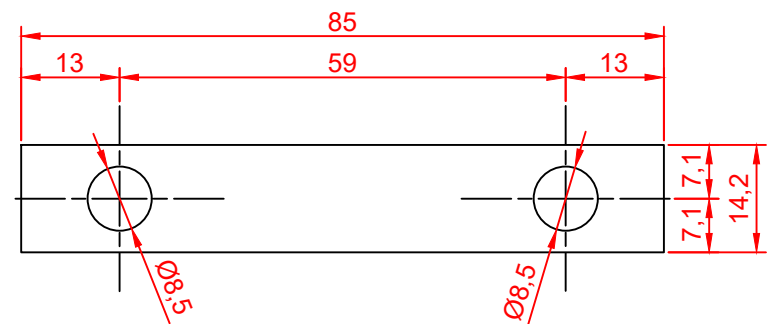
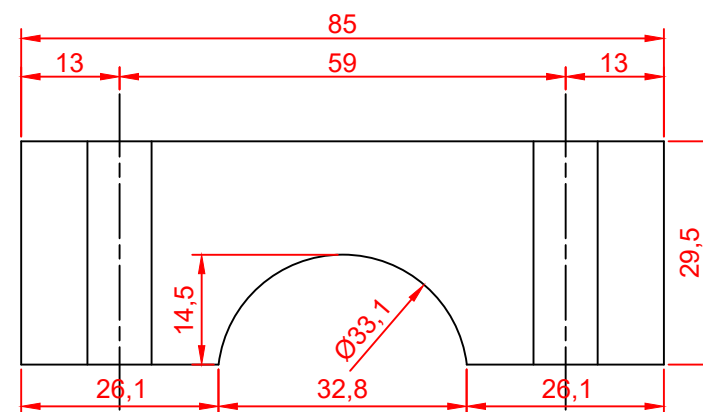
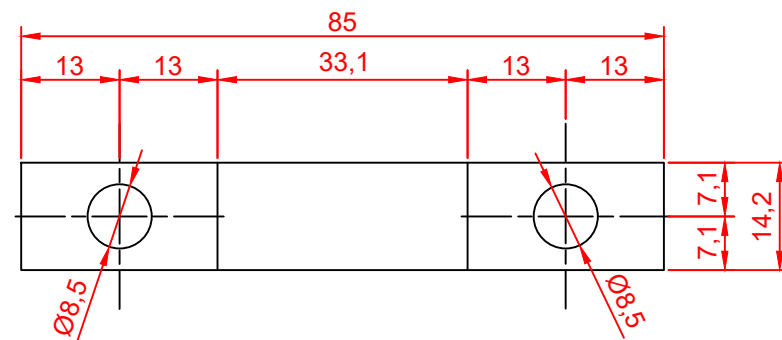


1:2

PIECE 2 inférieure



PIECE 3 supérieure



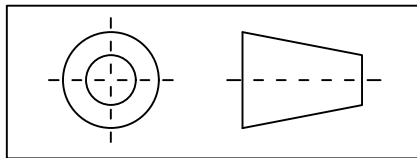
1:1

1:1

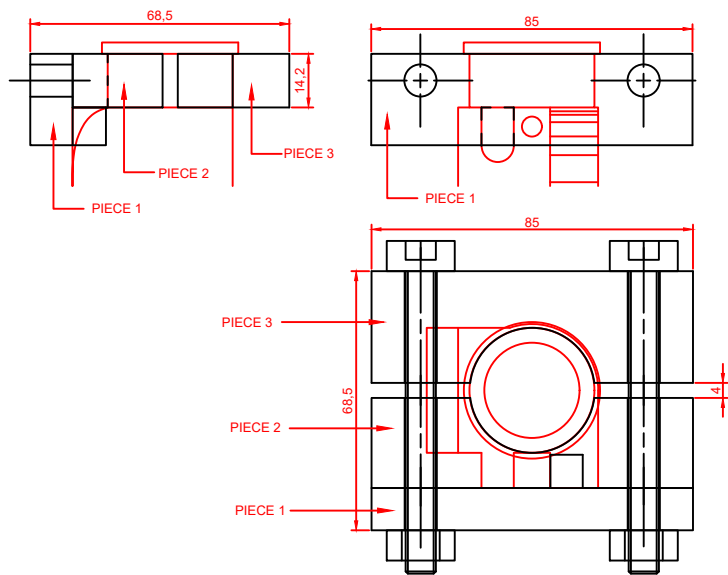
Plan de fabrication d'un outil de démontage sur étau d'un canon de carabine Krag Jorgensen norvégien 1892

Théophile FRIEDERICH

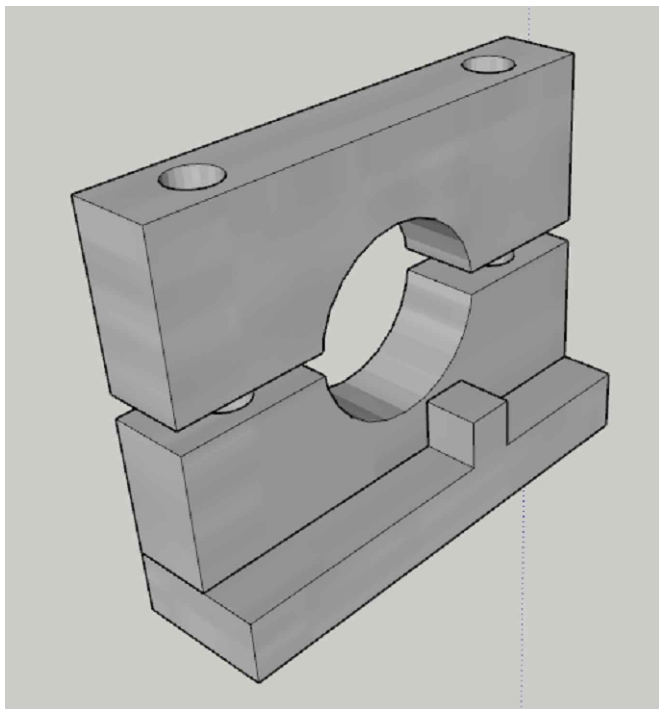
29/09/2019



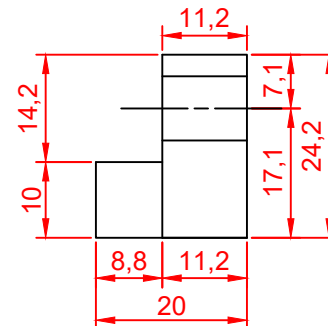
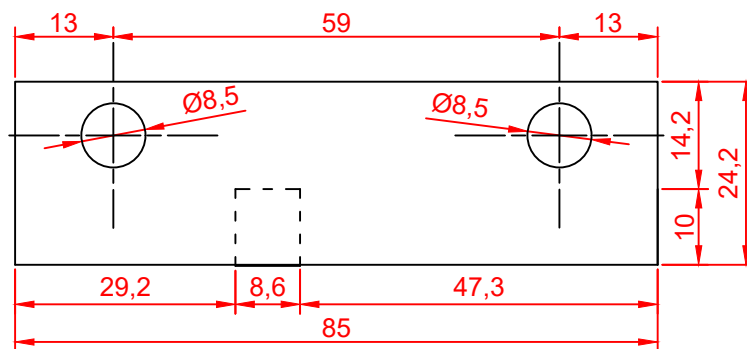
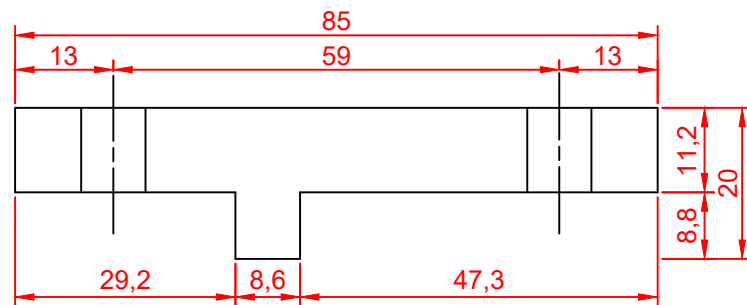
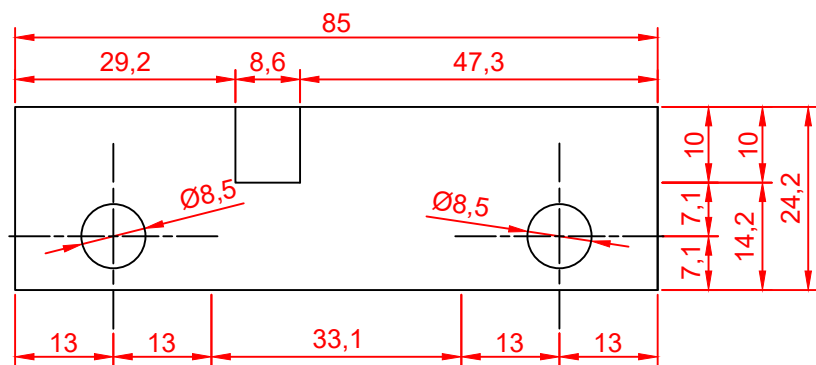
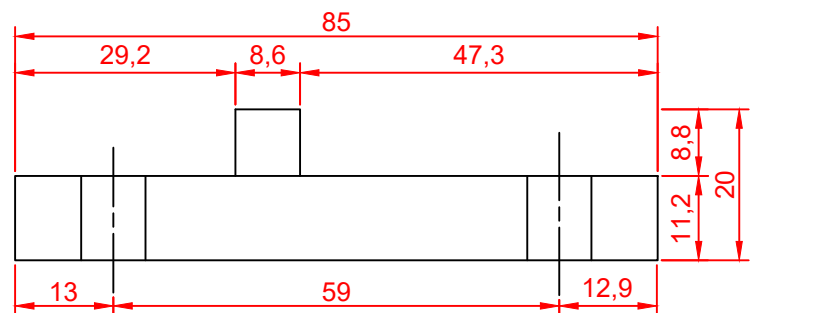
3 pièces de l'outil assemblé



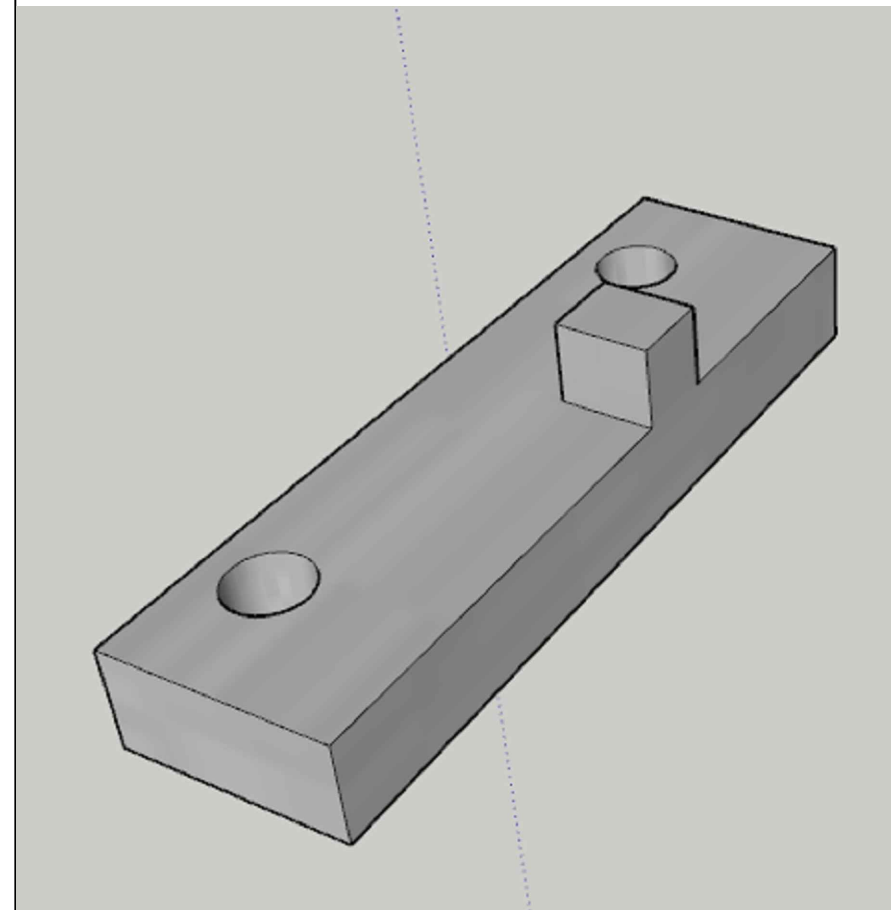
1:2



PIECE 3 embase et ergot de verouillage



1:1



Plan de fabrication d'un outil de démontage sur étau d'un canon de carabine Krag Jorgensen norvégien 1892

Théophile FRIEDERICH

29/09/2019

