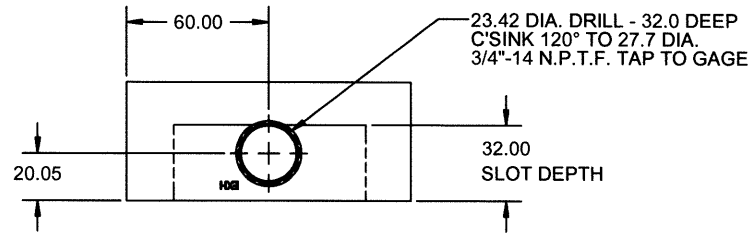
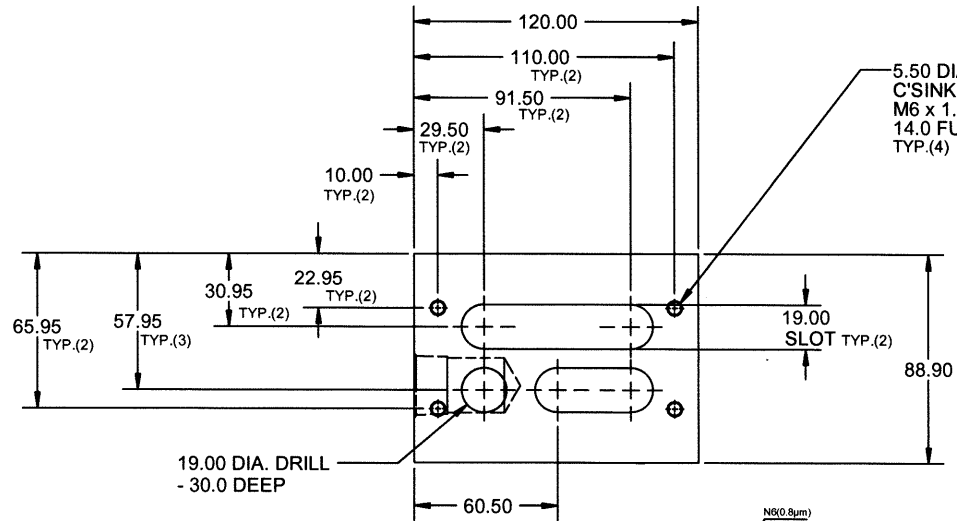


23.42 DIA. DRILL - 38.0 DEEP
 C'SINK 120° TO 27.7 DIA.
 3/4"-14 N.P.T.F. TAP TO GAGE

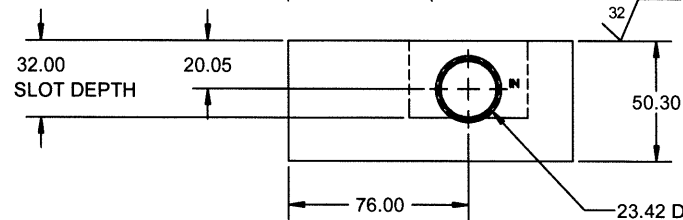


23.42 DIA. DRILL - 32.0 DEEP
 C'SINK 120° TO 27.7 DIA.
 3/4"-14 N.P.T.F. TAP TO GAGE



5.50 DIA. DRILL - 16.0 DEEP
 C'SINK 120° TO 6.3 DIA.
 M6 x 1.0 THREAD FORMING TAP
 14.0 FULL THREAD DEPTH
 TYP.(4)

19.00 DIA. DRILL
 - 30.0 DEEP



23.42 DIA. DRILL - 32.0 DEEP
 C'SINK 120° TO 27.7 DIA.
 3/4"-14 N.P.T.F. TAP TO GAGE

MODEL NUMBER: XX SERIES

					SCALE FULL	- STANDARD DIMENSIONS ARE IN MILLIMETERS	MAC VALVES, INC. WIXOM, MICHIGAN	
					DRAWN DRD			
					DATE 01/12/11	- TOLERANCES ON DIMENSIONS UNLESS OTHERWISE SPECIFIED	PART NAME HIGH FLOW TEST BLOCK FOR EMHART	
					CHKD XXX	ANGULAR ±1/2°	SOLIDWORKS PART FILE SIR7305.SLDPRT	
					DATE XX/XX/XX	X DECIMAL ± .2 MM	PART NUMBER SIR7305	
						.XX DECIMAL ± .1 MM	CONFIGURATION DEFAULT	
					SURFACE TREATMENT	MATERIAL #6061-T6511 ALUMINUM		
#	X	X	X	X				
SYM	CHANGE	ECN	BY	DATE	<small>CONFIDENTIAL. This document is the property of MAC Valves. The contents of this document are confidential and constitute trade secrets proprietary to MAC Valves. Neither this document nor its contents may be disclosed to or used by any unauthorized person, copied, or published without MAC Valves' prior written consent. Copyright © MAC Valves, Inc. All rights reserved.</small>			