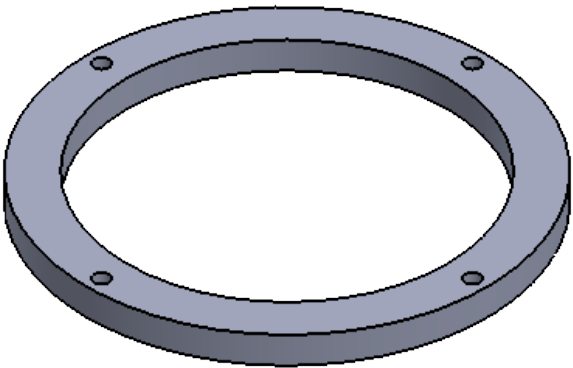


This document and all information contained herein are the exclusive property of Gecko Biomedical.
Information may be subject of intellectual property rights protection including pending or granted patents.
It may not be used or reproduced, in whole or part, other than as expressly permitted by Gecko Biomedical.
Copyright © 2016 Gecko Biomedical - All rights reserved

GECKO BIOMEDICAL
74, rue du Faubourg Saint-Antoine
75012 PARIS, FRANCE
+33 1 76 21 72 28

THIS DRAWING WAS PRODUCED USING SOLIDWORKS 2017

REVISION				
REV	DESCRIPTION	DATE	DRWN	APP'D



Part		Material		
FIRST ANGLE PROJECTION		PROJECT CODE / PART N°:		A3
UNLESS OTHERWISE SPECIFIED DIMENSIONS ARE IN MM DIMENSION TOLERANCES 2 DECIMAL ±0.25 1 DECIMAL ±0.5 0 DECIMAL ±1 ANGLE ±0.5° RAD/CHAM ±0.5 REMOVE ALL BURRS AND SHARP EDGES DO NOT SCALE DRAWING		NAME	VISA	DATE
		DESIGNER	dmoreau	08/04/2019
		DRAWN		
		CHECKED		
		APPROVED		
TITLE:		DWG NO.	Upper jaw face	REV
WEIGHT:	VOLUME:	SCALE:1:2	SHEET 1 OF 1	