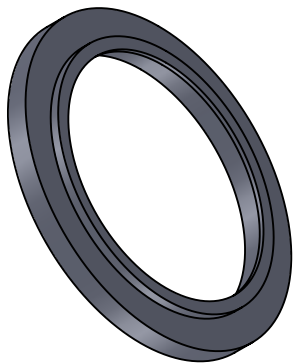



COUPE A-A



- notes:
1. machine part from CNC raw material.
 2. break all edges R0.2-0.3mm.
 3. all dimensions after finishing.

 antidotesolutions	geometric dimensioning and tolerancing to be interpreted per ISO 2768 all dimensions are mm	
	material: POM	
finish description: ébavuré	untoleranced length dimensions (mm)	
	length dimensions	tolerance
	from 0,5 up to 6	+/- 0.1
	over 6 up to 30	+/- 0.2
	over 30 up to 120	+/- 0.3
	over 120 up to 400	+/- 0.5
	untoleranced angle dimensions +/- 5°	

designed by: Alex Guiral - alex.guiral@antidote-solutions.com		
format: A4	scale:1:1	date: 27/03/2019

confidential - this drawing contains information that is proprietary to the customer and may not be disclosed without permission.

drawing name:	MB.010.151A
drawing number:	115-H1-2B_modified