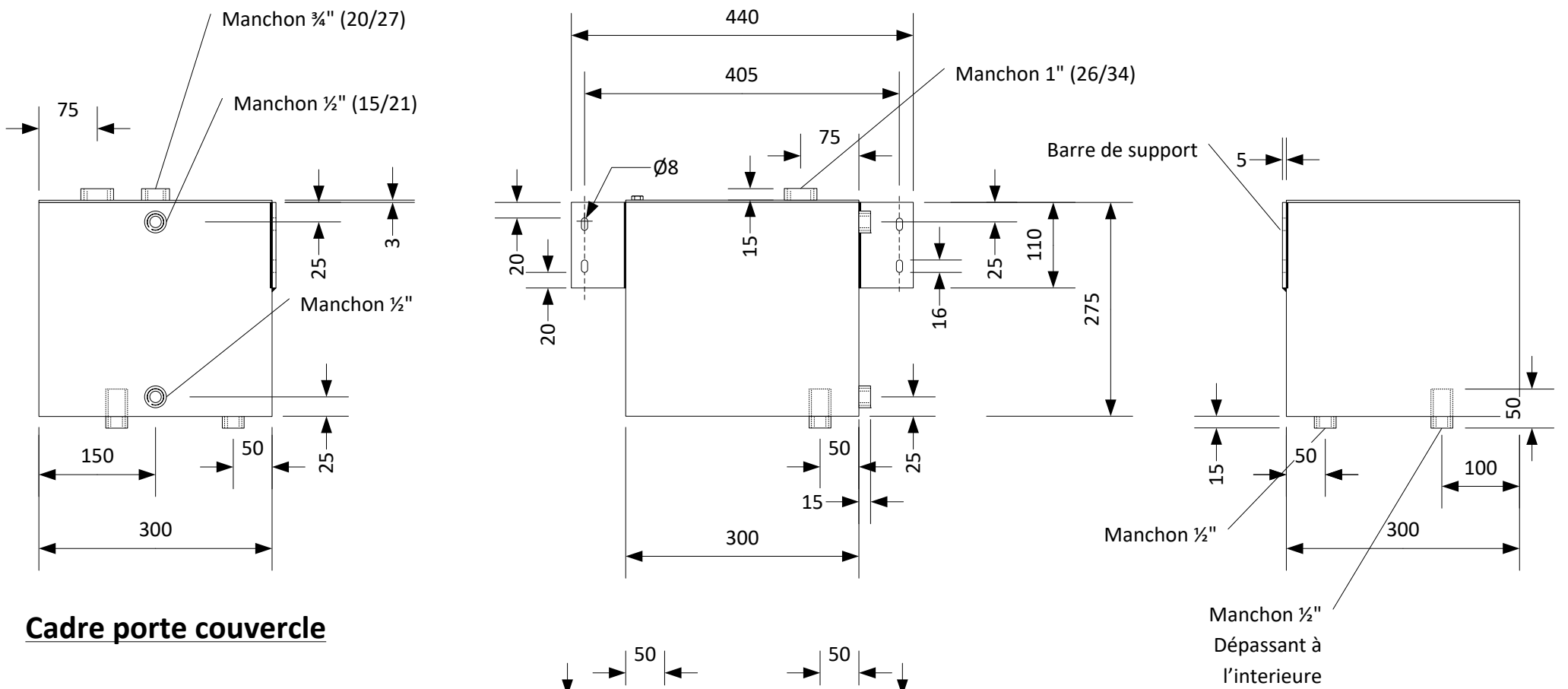
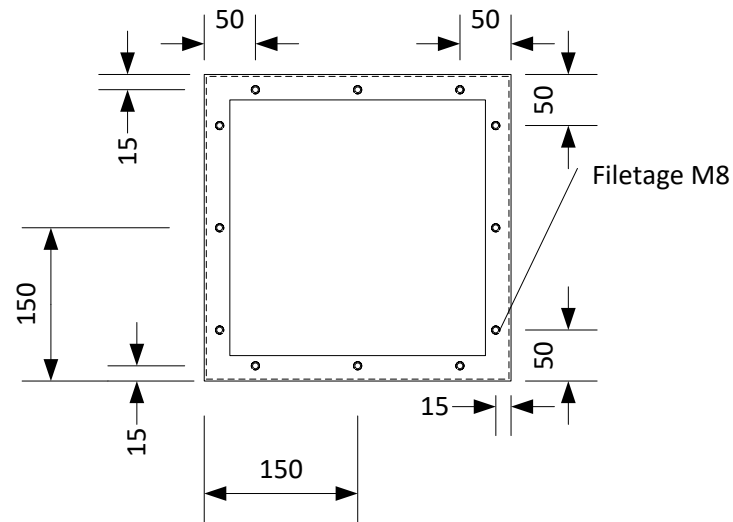


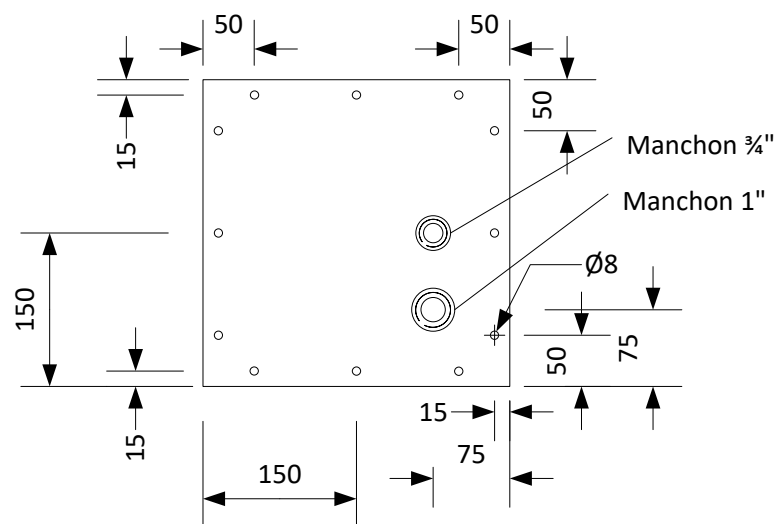
## Caisse Hydraulique



## Cadre porte couvercle



## Couvercle



Face Av, Ar, G, D et inferieur : Tôle acier 2mm

Barre de support: Tôle acier 5mm

Cadre supérieur: Tôle acier 3mm

Manchons acier

Assemblage plié / soudé étanche

Couvercle: Tôle acier 3mm