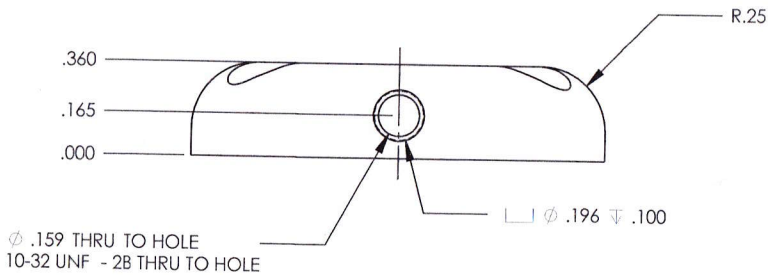
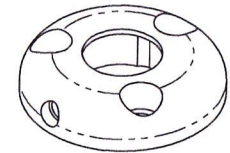
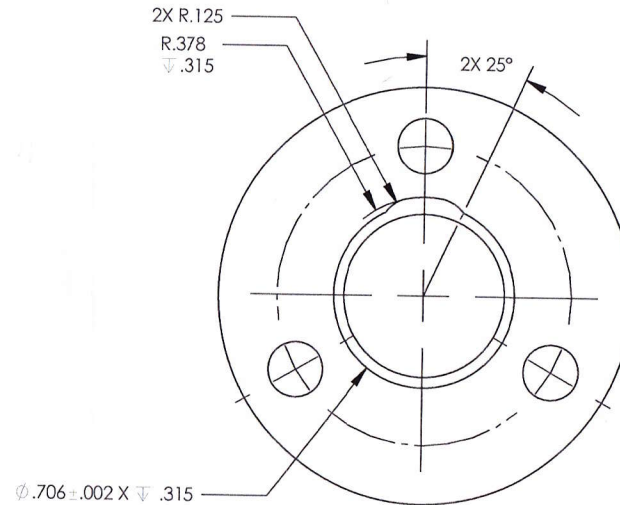
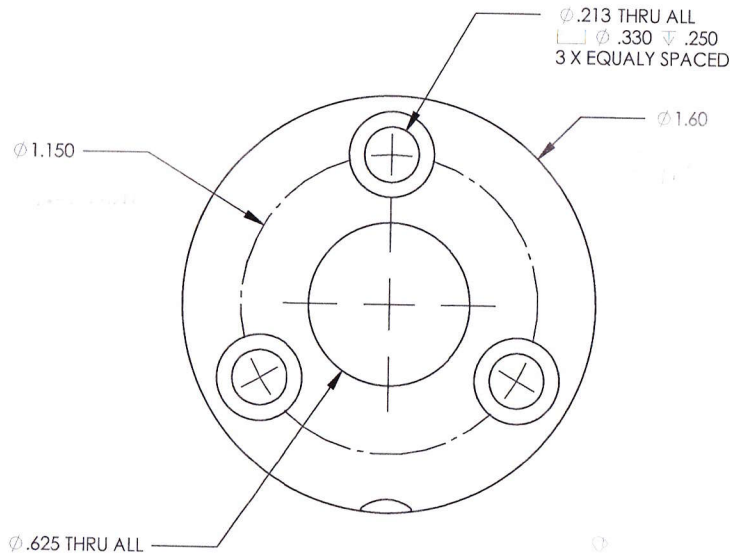


NOTES: (UNLESS OTHERWISE SPECIFIED)

1. SURFACE FINISH: F 11 STANDARD 311-1047-000 (TUMBLED & ANODIZED)
2. COATING FINISH: ANODIZED BLACK PER MIL-A-8625 TYPE 2  
DO NOT USE DICHROMATE SEALING.
3. BREAK ALL SHARP EDGES.

REVISIONS						
REV.	ZONE	DESCRIPTION	DATE	BY	ECO	APRV
A		RELEASED TO PRODUCTION	8/07/03	ARW	2497	ARW
B		SET SCREW FROM 6-32 TO 10-32 THREAD	5/16/2005	DE	2740	
C	D3	COUNTERBORE FROM $\phi$ .161 TO $\phi$ .196	5/23/08	JAG	3143	GH



UNLESS OTHERWISE SPECIFIED:		DRAWN		NAME		DATE	
DIMENSIONS ARE IN INCHES		CHECKED		AW		6/13/05	
TOLERANCES:		ENG APPR.		GH		6/08/05	
XX = ± 0.015		MFG APPR.		AW		5/23/08	
XXX = ± 0.005		SALES		6/15/05		KAI	
Z = ± .5°		MATERIALS		6061-T6 ALUMINUM		PER QQ-A-200/8	
SURFACE = 63		CoM:		NA		SIZE DWG. NO.	
INTERPRET DIM AND TOL PER: ASME Y14.5M - 1994		REVISIONS		REV		C	
MATERIAL:		1750110		MTG ASSY, RING		TITLE:	
6061-T6 ALUMINUM		NEXT ASSY		USED ON		MOUNT, RING	
6061-T6 ALUMINUM		APPLICATION		DO NOT SCALE DRAWING		SCALE: 2:1	
PER QQ-A-200/8		WEIGHT: 0.04 LBS		SHEET 1 OF 1		REV	
NA		SCALE: 2:1		SHEET 1 OF 1		C	