

D

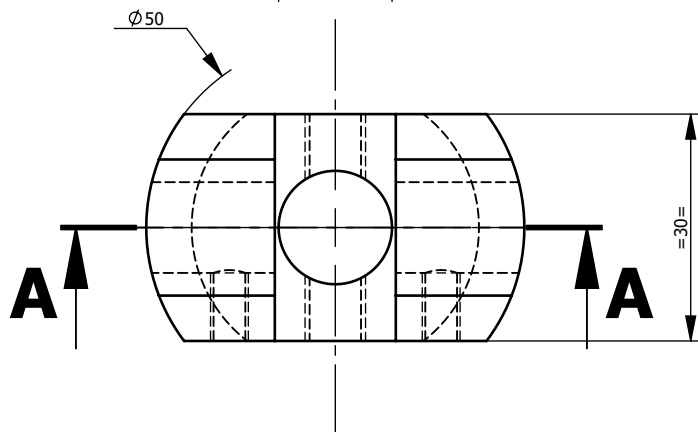
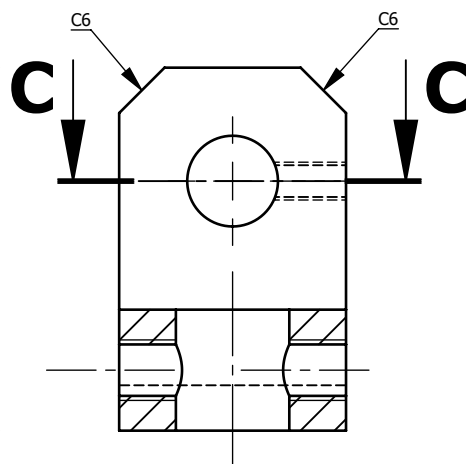
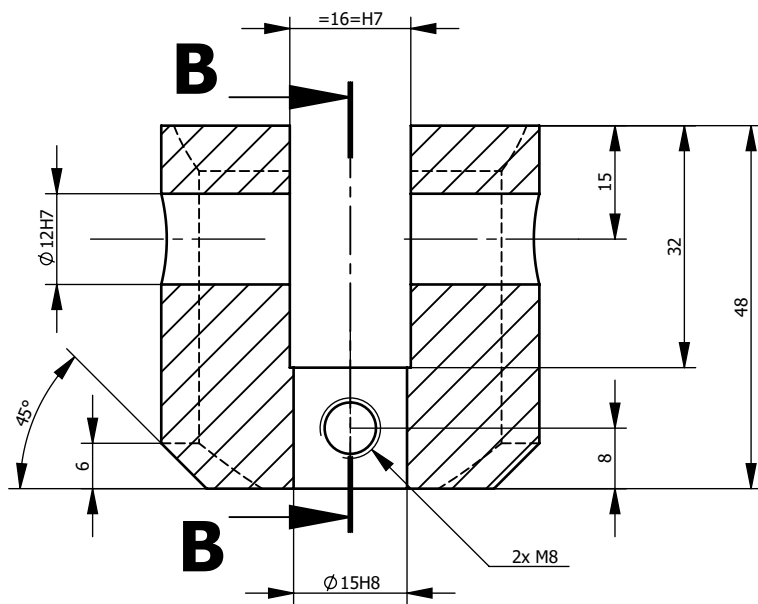
C

B

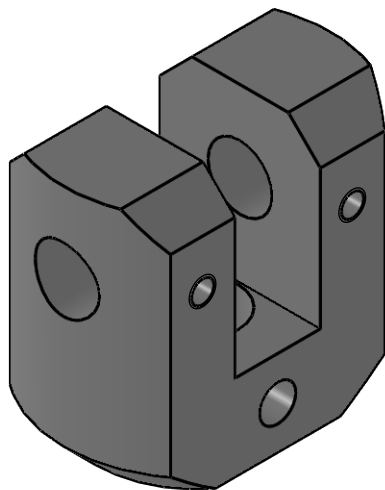
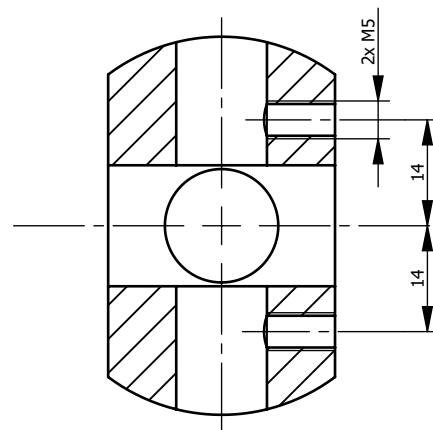
A

A-A

B-B



C-C



Ind -

Matière / Material

INOX 304L (X 2 Cr Ni 19-11)

Tolérances générales - Unless Otherwise specified:
Tolerances, sheet metal, piping: ISO 2768-CK
Autres cas - Other cases: ISO 2768-FH
Rugosité - Roughness: Ra3.2

Ebavurages et arêtes non fonctionnelles
Deburring and Non-functional edges:

ISO 13715

+0.8

0

-0.1

-0.5

Encombrement / size
(mm)

X: 0
Y: 0
Z: 0

Masse/Mass 0.34 Kg

NOM

DATE

CREATION/

EVOLUTION

Finitions:

Toutes les dimensions sont en mm.
All dimensions are in mm.

Format

A4

Echelle /

Scale 1:1

Projection

Planche/Sheet

obs:

1/1

n°: noix

ind: -

D

C

B

A