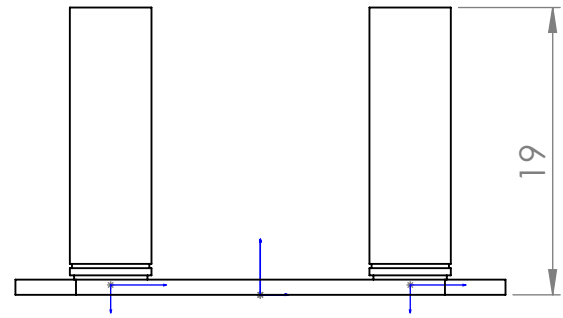


6 5 4 3 2 1

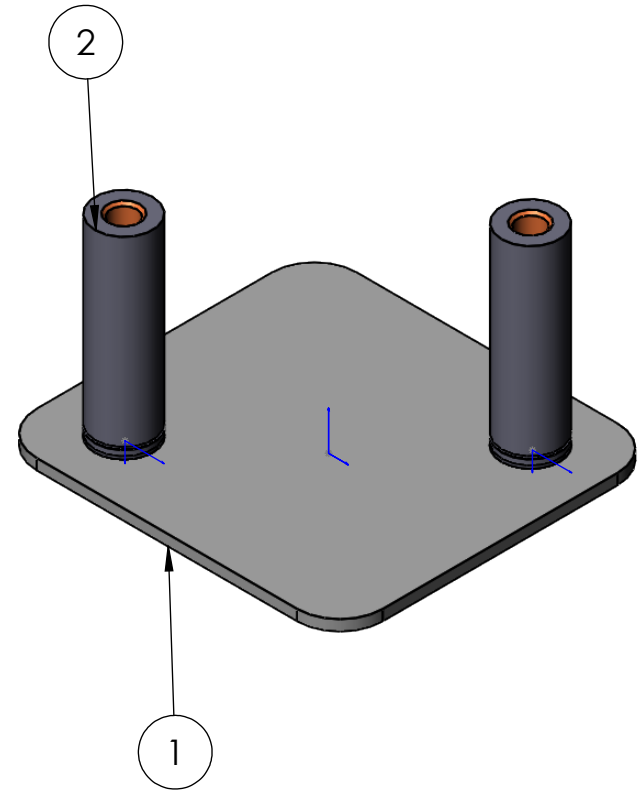
D

No. ARTICLE	NUMERO DE PIECE	DESCRIPTION	QTE
1	base_backingplate		1
2	TSO4-6M3-1900-PennEngineering-07-20-2017	Entretoise M3	2

C



B



D

C

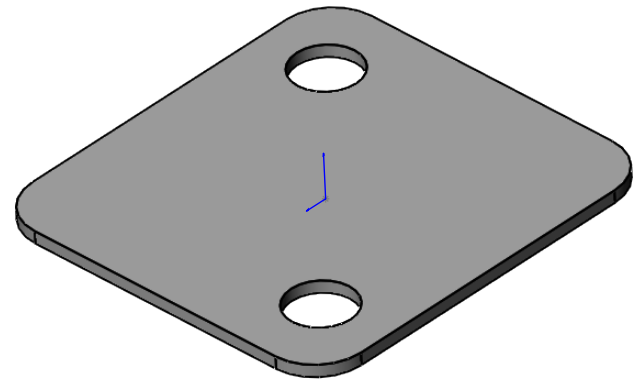
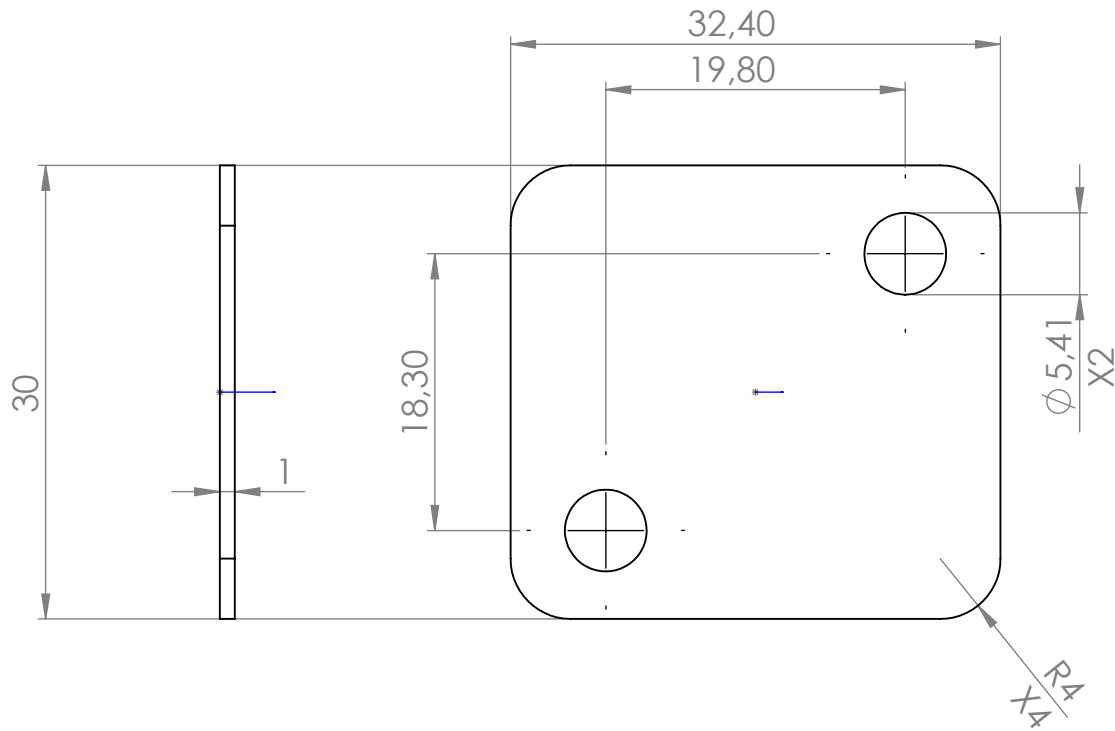
B

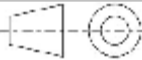

A

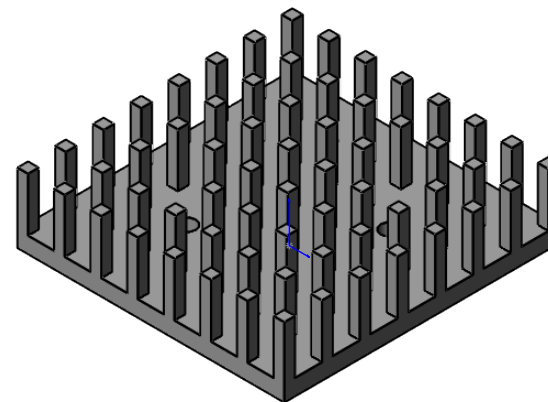
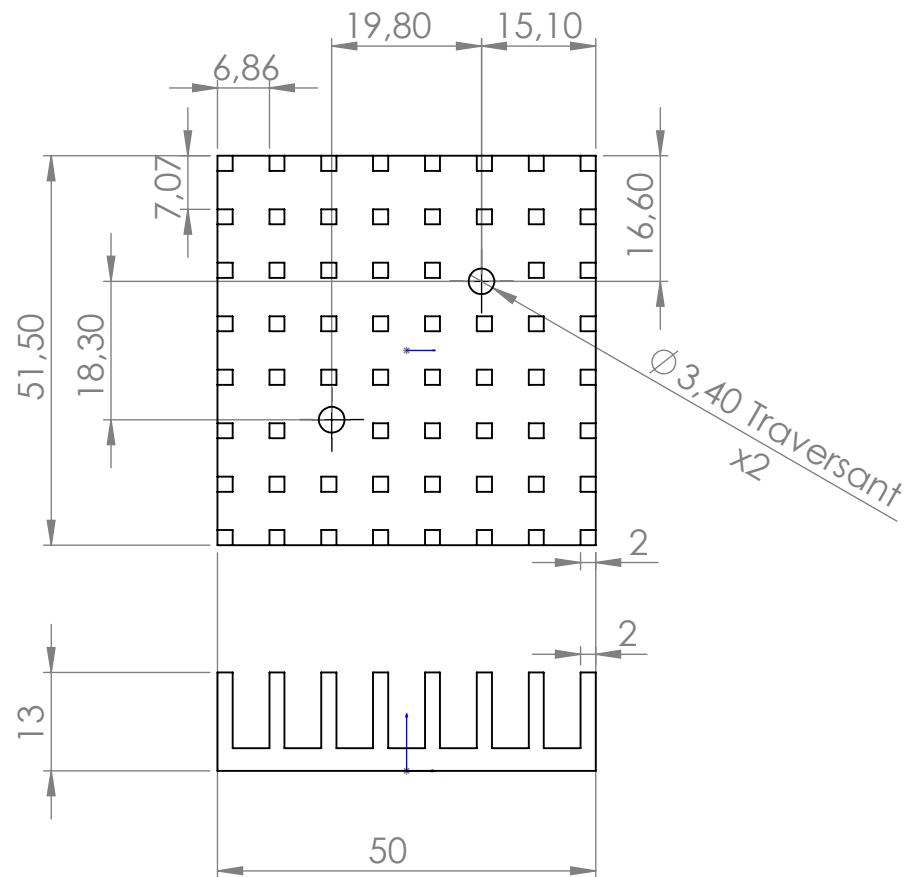
Project: Powerblade					
	Nom	DATE	Ne pas changer l'echelle	REVISION A	Titre
DRAWN	JJ Chanut	26/07/2017	Sauf indication spécifique, toutes les dimensions sont en mm Finition: TOLERANCES: LINEAIRE: +/-0.1 ANGULAIRE: +/-3°		Backing plate
			MATERIAL:		Référence
			Al 6060		01A
			WEIGHT:		A4
				Echelle:2:1	SHEET 1 OF 2

6 5 4 3 2 1

A



Project: Powerblade					
	Nom	DATE	Ne pas changer l'echelle	REVISION A	Titre
DRAWN	JJ Chanut	26/07/2017	Sauf indication spécifique, toutes les dimensions sont en mm		base_backingplate
			Finition:		
			TOLERANCES:		
			LINEAIRE: +0.1		
			ANGULAIRE: +3°		
			MATERIAL:		Référence
			Al 6060		01A
					A4
			WEIGHT:		Echelle:2:1
					SHEET 2 OF 2



Project: Powerblade					
	Nom	DATE	Ne pas changer l'echelle	REVISION A	Titre
DRAWN	JJ Chanut	26/07/2017	Sauf indication spécifique, toutes les dimensions sont en mm		Heatsink
			Finition: TOLERANCES: LINEAIRE: +0.1 ANGULAIRE: +3°		
			MATERIAL:		Référence
			Al 6060		02A
			WEIGHT:		A4
				Echelle: 1:1	SHEET 1 OF 1