

Notes:

1. GENERAL TOLERANCE : ISO 2768mK
 ALL DIMENSIONS ARE IN mm U.N.O
 REMOVE ALL SHARP EDGES.
 2. MACHINING : Ra3.2 (1.6)

Rev No	Revision note	PROTO	Date	Signature	Checked
Rev A			28/02/2016		

Vue de dessus

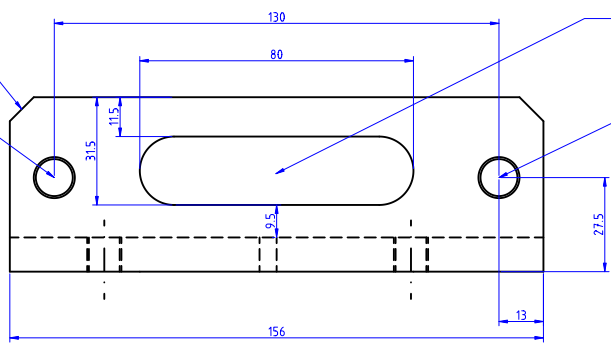
Chanfrein non représenté sur toute les vues pour lisibilité général.

Chanfrein 7 mm x5 deg

Taraudage 12x150 traversant

Rainurage 20 mm traversant

Taraudage 12x150 traversant

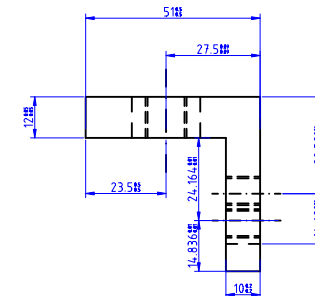


Vue de face

Vue de coté

Taraudage 10x125 traversant

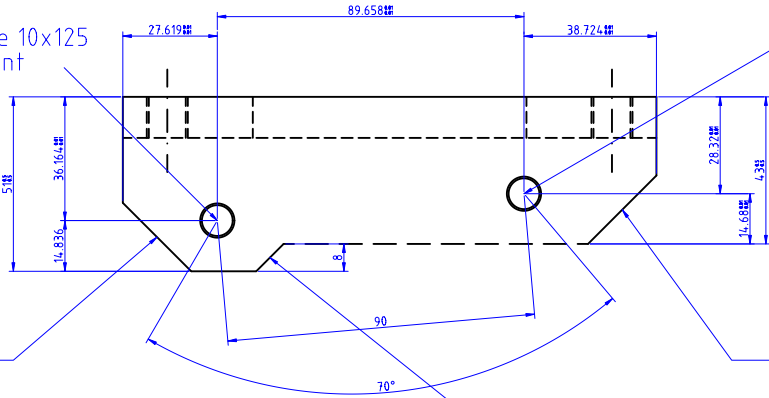
Taraudage 10x125 traversant



Chanfrein 20mm x45 deg

Chanfrein 20 mm x45 deg

Chanfrein 8 mm x45 deg



Item ref	Quantity	Cale étrier Porsche Boxster Arrière 986 pour MX5 NB arrière - 300x24		Article No./Reference	
Designed by : S.Quent	Checked by	Approved by - date	Filename	Date 18/2/2016	Scale
GRP Automotive				Edition	Sheet