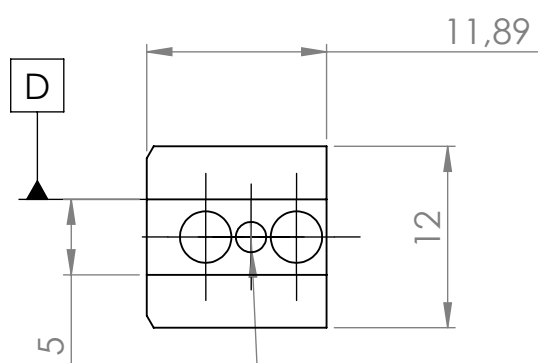
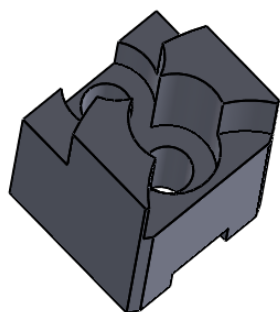
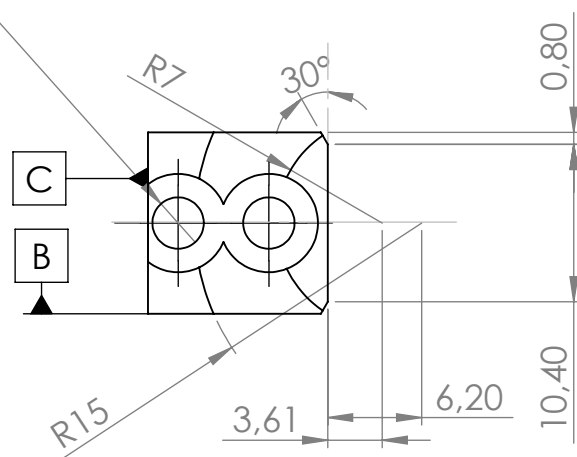


2 x  $\varnothing$  3,40 A TRAVERS TOUT

$\varnothing$  6,50  $\nabla$  8,40

$\varnothing$  0.1 A - B - C



$\varnothing$  2 H9

$\varnothing$  0.1 C - D

Edition d'éducation **SOLIDWORKS** – Usage universitaire uniquement.

MISE EN PLAN MORS

quantité : 3

MATERIAU : ALU 3000

Tolérance générale ISO 2768mK