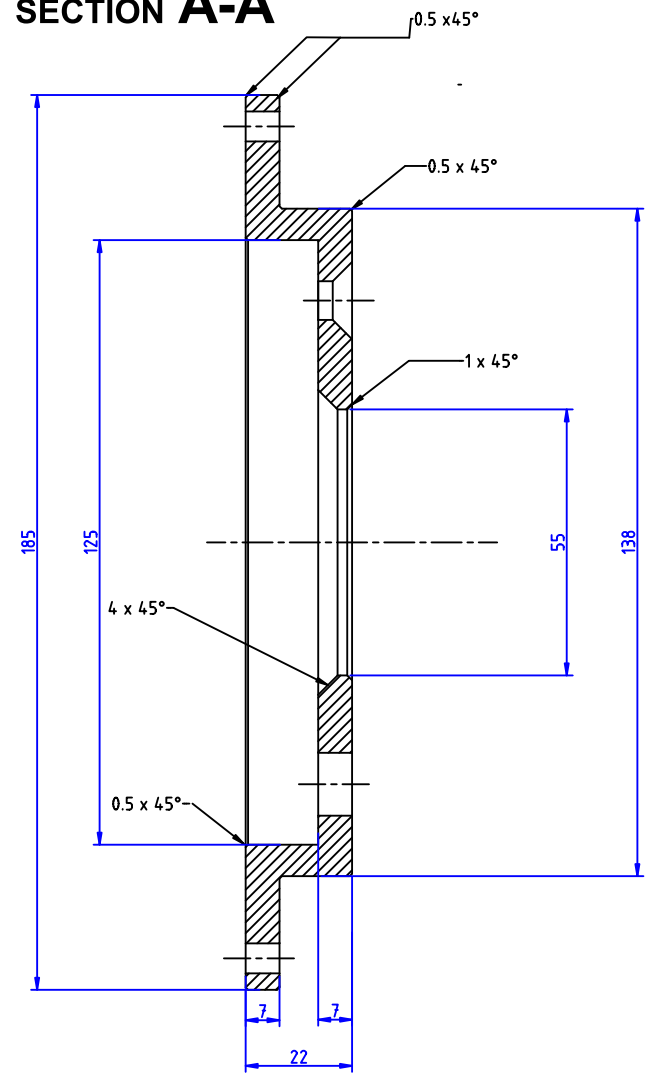


NOTES :
 1. GENERAL TOLERANCE : ISO 2768mK
 ALL DIMENSIONS ARE IN mm U.N.O
 REMOVE ALL SHARP EDGES.
 2. MACHINING : Ra3.2 (1.6)

SECTION A-A



BOL-MX5-GRP	Quantity	Bol Alu Av MX5 Mk1/2 310mmx28 pour etrier 986			Article No. 1 / BOL-MX5-GRP		
Designed by : S.Queret	Checked by : S.Queret	Approved by - S.Queret 14/12/2015		14/12/2015	Scale 1/1		
GRP Automotive				Edition	Sheet		
					1/1		